



UNSW IT – Install Guide for Windows SPSS v26

SPSS Installation

1. **Download** the SPSS Statistics 26 by visiting the below URL:

<https://www.myit.unsw.edu.au/services/staff/software-staff>

Download SPSS Statistics

Windows 64-Bit – [Click here](#) (File type: EXE)

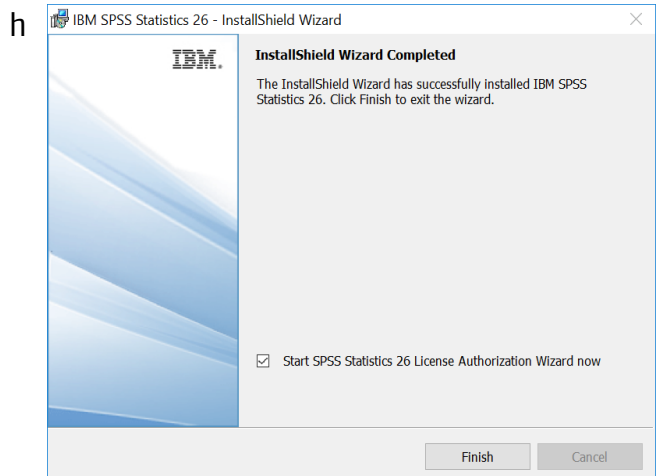
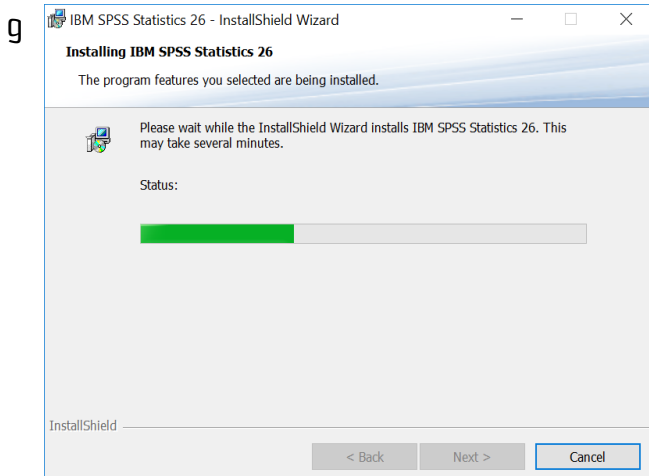
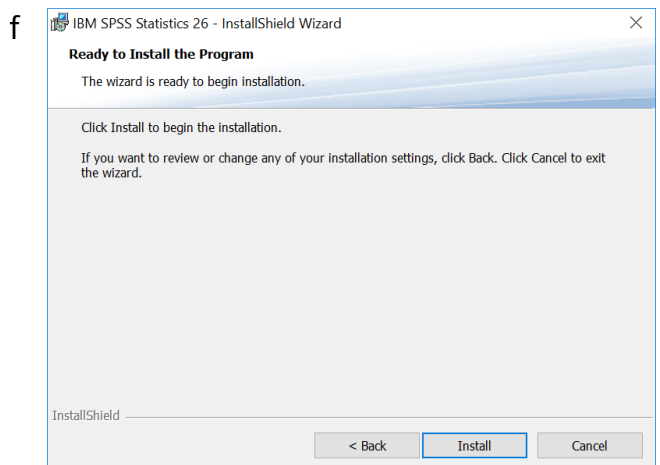
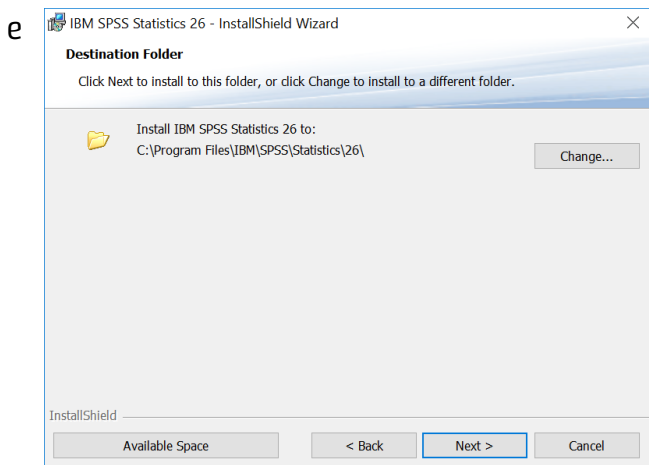
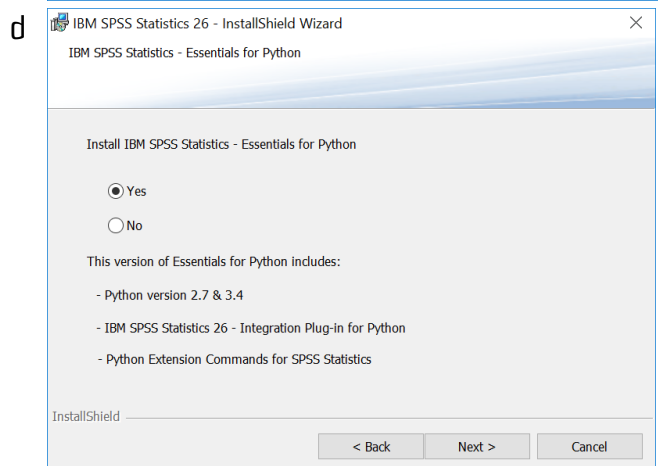
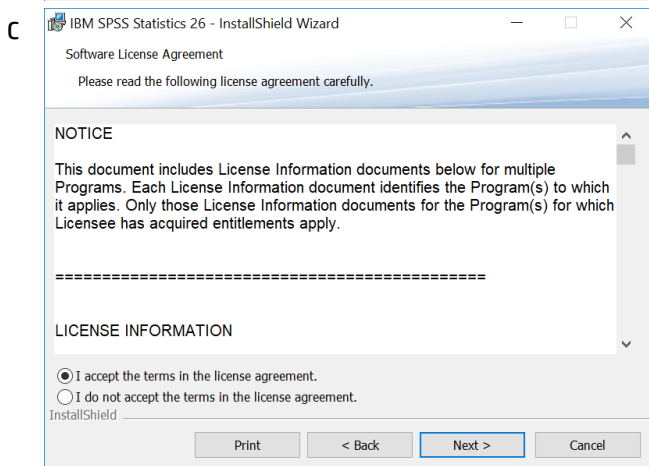
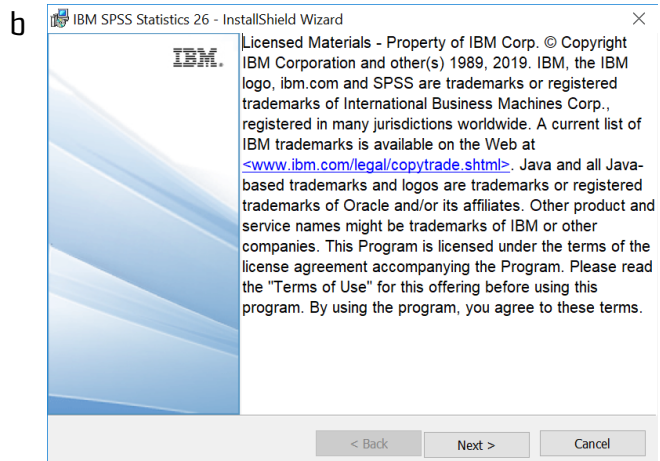
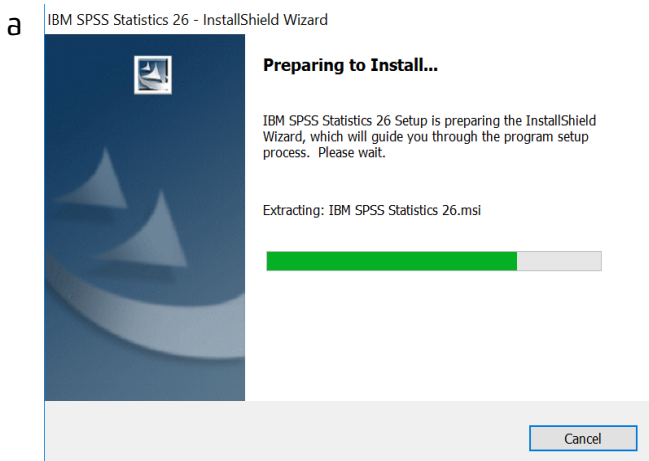
Windows 32-Bit – [Click here](#) (File type: EXE)

Mac OS – [Click here](#) (File type: DMG)

Linux OS - [Click here](#) (File type: BIN)

2. **Save** the installer file to your desired location, you will need to run this installer once its downloaded. (Note that file name is called 'SPSS_Statistics_26_Windows_x64.exe').
3. Follow the visual steps below to install:

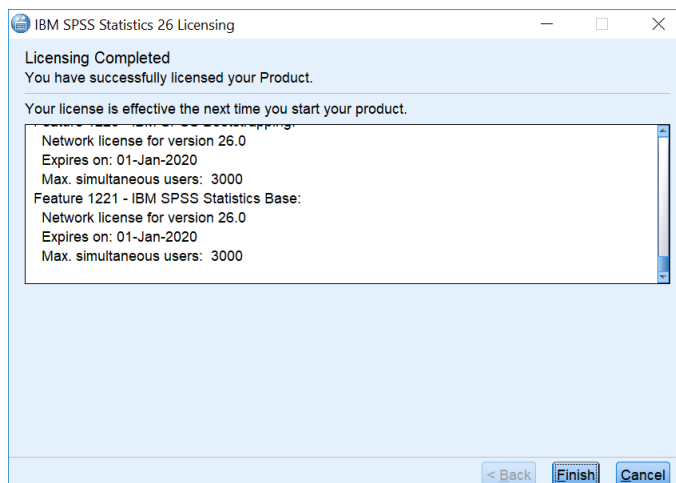
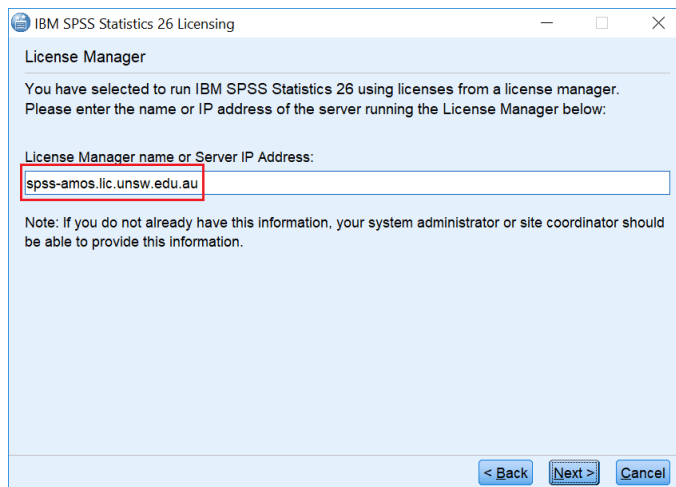
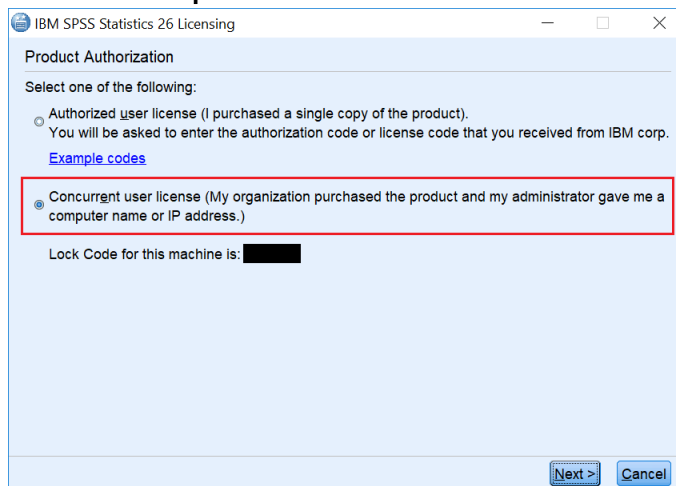
You can choose to select installing 'IBM SPSS Statistics – Essentials for Python' if needed on step 4 of installation steps.



Licensing SPSS:

After finishing the SPSS installation, you would have to run 'IBM SPSS Statistics 26 License Authorization Wizard' if you have not had the tick box ticked on at the last windows finishing SPSS installation. Please make sure your computer is connected to UNSW network, ie on Uniwide or UNSW provided Ethernet connection or VPN. VPN configuration guide can be located on the following site: <https://www.myit.unsw.edu.au/services/students/remote-access-vpn>

The UNSW SPSS license server is: **spss-amos.lic.unsw.edu.au**



Commuter License (optional)

Commuter license is also available if you are traveling and might not have internet connectivity to use UNSW VPN. Please follow the instruction below for the commuter license.

Run 'IBM SPSS Statistics 26 Commuter License' application and check out from available pool.

If check out license is for over 7 days, locate the spssprod.inf file in the destination folder selected during SPSS installation on step e. Use 'Open with' option by right clicking on spssprod.inf file and select 'notepad' to edit. Update the field 'CommuterMaxLife' from 7 to 30. After saving the file, run 'IBM SPSS Statistics 26 Commuter License' application and check out from available pool.

Please note maximum checkout days for Commuter License is 30 days, if needed for more than that, need to renew/check out SPSS commuter license again while connected to UNSW VPN or UNSW network.

