



Regional Educational Outreach

Years 9 - 12



2025



At UNSW, we are committed to student equity and improving educational outcomes for students underrepresented in higher education.

Our goal of widening access and diversifying the student population through the Gateway Admission Pathway is making steady progress with 19% of our undergraduate cohort coming from under-represented backgrounds. A large factor in the success of our programs comes from the holistic approach we take in supporting students from pre-tertiary outreach through to transition to university and graduate success.

While our pathway provides a small proportion of students with an early offer to UNSW, we are unlike other early offer admission schemes because our program supports success in the HSC and all offers are conditional on students attaining an ATAR. Through our academic enrichment program our key message to students is that success in the HSC sets them up for success in their first year of university.

The UNSW Gateway educational outreach program also extends students' interest in their own learning by linking their values to career choices and focusing on higher-order thinking, metacognition, critical analysis and literacy - all essential for post-school success. This unique set of curriculum-linked learning experiences has an embedded focus on leadership and self-efficacy. It is interactive, experiential and uses innovative technologies to explore the unique context of studying at UNSW.

UNSW ranks first in Australia for employability, meaning students who enter through the Gateway Admission Pathway gain access to expanded career opportunities after they graduate.

We are excited about our UNSW Gateway Admission Pathway and Program offering for 2025 and we look forward to meeting with you and welcoming your staff and students on campus.



Mary Teague

Director, Access, Equity & Inclusion
Division of Societal Impact, Equity & Engagement
UNSW Sydney



Contents

Student life cycle	01
Theory of change	03
Student journey	05
Gateway Admission Pathway	09
Year 12 Gateway Program	11
Residential Program	13
Year 11 Gateway Program	15
Timeline and key dates	17
Gateway partner schools	19

Student life cycle

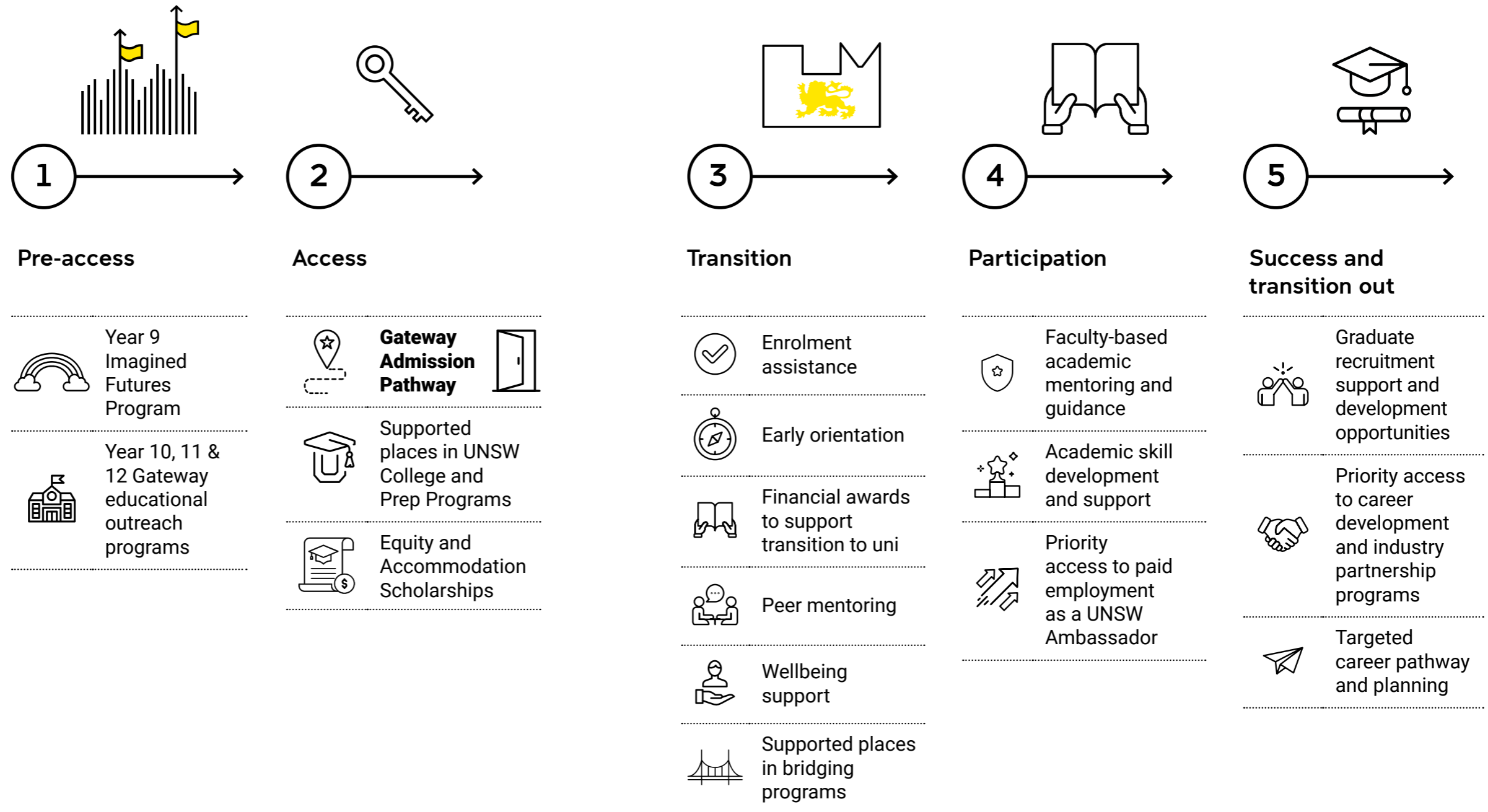
Improving access and support across the student life cycle

"Gateway exists to recognise you and support you. UNSW is a very exciting, safe and supportive environment. It's a great opportunity and if you're eligible you deserve to take it."

Saoirse Chu
Kingscliff High School
Bachelor of Arts/Law



UNSW takes a holistic approach in supporting students who are underrepresented in higher education to access and succeed at university.



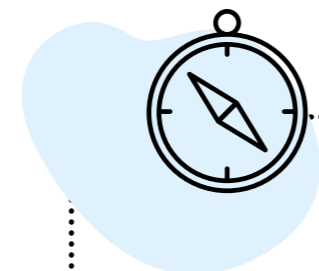
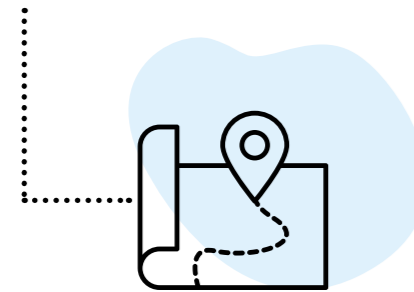
Theory of change

The UNSW Gateway Program falls within the pre-access and access phase of the student lifecycle and is underpinned by a tailored theory of change. This theory of change articulates the impact we intend to have and how we aim to have that impact.



THE MAP

Improving students' understanding of university to aid informed decision-making about post-school options.

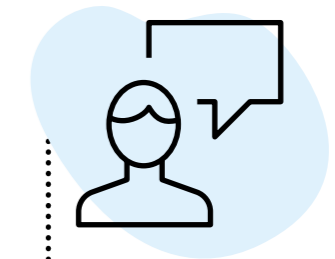
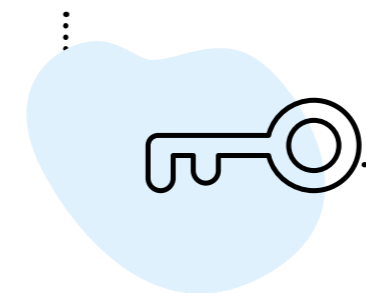


THE COMPASS

Building students' learner identity and confidence to successfully navigate their educational journey.

THE KEY

Enhancing students' academic attainment and reducing barriers to entry for expanded post-school study options.



THE GUIDE

Providing students with trusted information from current university students from equity backgrounds.

Students Build Educational Capacity

- Students develop their understanding of future possibilities and begin to map out their path from school to tertiary education and beyond
- Students develop an understanding of how to use their learning strengths to navigate their education journey
- Students build the skills to enhance their academic attainment

Students Apply

- Students apply their knowledge and skills to achieve academically
- Students make informed decisions about their education futures which suit their strengths, interests and goals
- Students apply through the Gateway Admission Pathway and successfully transition to university

Impact

- Students from underrepresented backgrounds have increased access to UNSW and are set up to succeed

Student journey

Year	Program	Description	Location	For whom
Year 12	Gateway	Students prepare for the HSC, access personalised mentoring, and academic skill-enhancing workshops.	Online	Students on ATAR pathway
	Gateway		On-campus	Students on ATAR pathway
	Residential Program	Students attend a four-day program at UNSW's Kensington campus to participate in the Gateway On-campus days, explore the local area and connect with current students.	On-campus	Students who live in regional areas on ATAR pathway
Year 11	Gateway	Students explore UNSW degrees, participate in academic masterclasses, and are immersed in the vibrant UNSW community.	On-campus	Students on ATAR pathway
	Gateway		Online	Students on ATAR pathway
Year 10	Gateway	Teachers have access to digital lesson plans and UNSW's InsideOut app to support students to discover how personal values can create pathways to future careers and areas of study.	Flexible	Students considering post-school learning
Year 9	Imagined Futures	Teachers have access to English curriculum-aligned lesson plans, and UNSW's Imagined Futures webapp, to support students to explore imaginative visions of the future.	Flexible	All Year 9 students

University Ambassadors

Our program is co-facilitated by current UNSW students, most of whom have come through the Gateway Admission Pathway. University Ambassadors serve as powerful role models who demonstrate the opportunities a university education can bring.



“The culture here at the uni and through the Gateway program made me feel wanted as a rural student. It was nice to not be judged on my background. The effort that the uni put in to help me get there, made me want to go to UNSW.”

Eliza Dampney
Narrabri High School
Bachelor of Data Science

Get ready for uni
with Uni Ready



UniReady



- ✓ Hear from current students
- ✓ Get tips and tricks on studying at uni
- ✓ Learn strategies for acing assessments

unireadytoolkit.com.au



DEVELOPED BY



Support at Uni

Scholarships and Awards, Start@UNSW Program, Peer and Academic Support

Students who come to UNSW through the Gateway Admission Pathway are prioritised for UNSW Equity and Accommodation scholarships and access to the Start@UNSW program to support their transition to university. They also have access to free bridging courses, peer mentoring and additional academic support for some subjects.

Gateway Admission Pathway



We know that the ATAR alone is not the only measure of students' academic potential or success at university. The Gateway Admission Pathway is an alternative entry to UNSW for eligible Year 12 students which provides early entry or a significantly lower ATAR entry requirement for a range of degrees.

Who is eligible?

To be eligible for the Gateway Admission Pathway, students must be:

- an Australian resident
- completing an Australian Year 12 qualification in the year of application

AND one of the following:

- attend a Gateway school
- live in a low-socioeconomic area based on IRSAD and IEO indexes of SEIFA
- Aboriginal and/or Torres Strait Islander

How does it work?

Students apply through the Gateway portal by submitting a written personal statement that answers three questions about themselves. The applications are assessed based on students' personal statements and Year 11 results. Successful students will receive either an early offer or early conditional offer for their chosen UNSW degree.

What is the difference between an early offer and early conditional offer?

Early offers for UNSW degrees require students to complete the HSC and attain an ATAR (regardless of the result).

Early conditional offers require students to complete the HSC and achieve the Gateway Adjusted ATAR for their chosen UNSW degree.

The Gateway Adjusted ATARs provide students with a significantly lower ATAR than the lowest selection rank. To find the adjusted ATAR for a specific degree visit gateway.unsw.edu.au

When do applications close and when are offers released?

In 2025, there will be two offer rounds for the Gateway Admission Pathway:

Round 1:

Applications open: April 2025

Applications close: July 2025

Offers released: September 2025

Round 2

Applications open: September 2025

Applications close: November 2025

Offers released: December 2025

Firm offers, post ATAR release:
December 2025

Please check out our website in early 2025 when specific dates are released.

Ongoing support

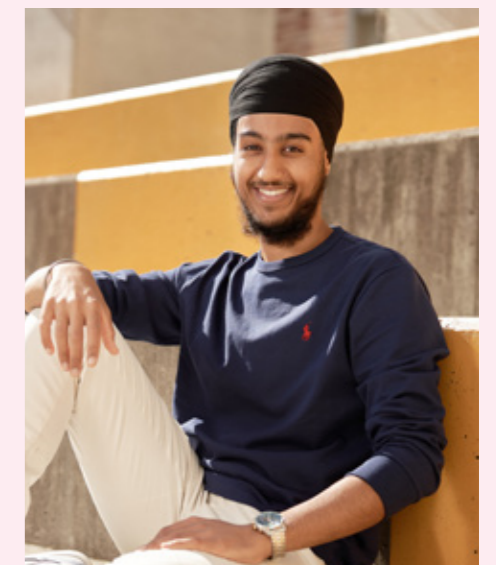
Students who come to UNSW through the Gateway Admission Pathway are prioritised for scholarships and receive exclusive access to ongoing academic and transition support.

Complementary outreach opportunities at UNSW Sydney

Students can access further opportunities through the UNSW Future Students team that complement the UNSW Gateway educational outreach programs. Years 10 – 12 can participate in on-campus faculty workshops, campus tours and degree information sessions in-school and online.

"Before I settled into uni I had a little bit of imposter syndrome. But I came to realise that missing a few percentiles on an ATAR doesn't make a difference. In healthcare, the greatest inequities lie in rural and regional areas. Having grown up there, I have the benefit of being able to relate to patients from disadvantaged, regional and rural areas."

Imreet Singh
Marian Catholic College Griffith
Bachelor of Medical Studies/
Doctor of Medicine



Year 12 Gateway Program

Delivered:

Information session for students from regional areas – 2 April, 5-6pm
OpenLearning resources – from Term 2, week 2
Gateway Online program – Term 2, week 9
On-campus – 9 and 10 July



Year
12

Year
11

Information session for students from regional areas

Online 2 April 5-6pm

Led by current UNSW students from regional areas, this online session provides students with the information and advice they need to feel confident about moving to Sydney for university. Students will have opportunities to ask questions for personalised advice, hear about services and opportunities to have a smooth transition to uni, and gain insight into how the Year 12 Gateway Program and the Residential Program can support them to achieve their future study goals.

Learning outcomes:

- Identify how to access program resources and opportunities and apply for the Residential Program
- Hear from current university students about how they navigated their transition to university
- Gain advice about scholarships, accommodation, support services and other opportunities at UNSW

OpenLearning resources

Available from Term 2, week 2

Students gain access to a suite of detailed, interactive resources via OpenLearning that provide subject-specific academic enrichment, opportunities to explore faculties and degrees, and support and advice about the transition to university. The OpenLearning site is co-designed by current students who are available throughout the program for personalised advice, insights and responses to questions.

Gateway Online Program

Delivered Term 2, week 9

During the online program, students will prepare for the HSC through subject-specific exam practice and workshops led by experienced HSC teachers and markers. Students will also be supported to write their personal statement, a requirement for their Gateway Admission Pathway application.

Learning outcomes:

- Access subject-specific seminars run by HSC markers to refine their exams skills and receive personalised advice and responses to questions
- Benefit from practice papers and individualised written exam feedback to support their HSC preparation, and access to the InspirationED HSC4ME app for further academic support
- Gain the opportunity to receive free online tutoring in a subject of choice
- Connect with current UNSW students to learn about what university is really like
- Be supported by specialised guidance on the application process for early offers to UNSW and access resources for writing an effective personal statement
- Understand the alternate pathways and support systems on offer at UNSW

On-campus Days

9 and 10 July, UNSW Kensington Campus

The on-campus experience offer students an opportunity to immerse themselves in university life.

Across the two-day program, they engage in faculty-specific experiences to deepen their interest in degrees and/or areas of study available at UNSW. They'll also connect with current students, clubs and student services, gaining firsthand insights into the vibrant campus community.

A self-guided scavenger hunt and market fair allows students to explore the campus in a creative and exciting way.

Learning outcomes:

- Participate in immersive faculty experiences to explore the range of degrees, facilities and teaching available to UNSW students
- Discover the UNSW campus and learn about student life through a creative self-guided scavenger hunt
- Connect with current students, academics, and university support staff to have all their questions about degree options, support services, and daily life at UNSW answered

The best way for students who live in regional areas to experience our on-campus days is via our Residential Program (turn the page for more information).

Residential Program

Delivered:

Sydney – 8 - 11 July

Year
12

Year
11

Residential Program

Year 12 students who live in regional areas are invited to attend a four-day residential program to explore UNSW's bustling Kensington campus in the heart of Sydney and spend three nights at accommodation near campus.

To be eligible, students must meet requirements for the Gateway Admission Pathway, live in a regional area and have an interest in pursuing university in Sydney. Interested students should submit an application, answering 2-3 questions about their passions, goals and strengths.

Applications open: 24 March 2025

Applications close: 2 May 2025



“Going to a country high school, not everyone wanted to go to uni... I was always academically-focused and enjoyed science, so uni seemed the place to go and UNSW had the best science program and was very strong on STEM.”

Sam North
Trinity Catholic College Goulburn
Bachelor of Advanced Science

Learning outcomes:

- Discover the UNSW Kensington campus and college accommodation options with guided tours
- Meet with faculty representatives and current students who moved from regional areas to study a range of degrees at UNSW
- Participate in two days of on-campus programming as part of the Year 12 Gateway Program
- Connect with other highly motivated Year 12 students
- Discover Sydney and the local area



Year 11 Gateway Program

Delivered:

OpenLearning resources – from Term 2, week 2
Online program – Term 2, week 9
On-campus – 10 July



Year
12

Year
11

OpenLearning resources

Available from Term 2, week 2

Students gain access to a suite of detailed, interactive resources via OpenLearning that provide subject-specific academic enrichment, opportunities to explore faculties and degrees, and support and advice about the transition to university. The OpenLearning site is co-designed by current students who are available throughout the program for personalised advice, insights and responses to questions.

Online Program

Delivered Term 2, week 9

During the online program, students will prepare for end of year exams and the transition to Year 12 through academically enriching subject-specific workshops led by experienced HSC teachers and markers.

Learning Outcomes:

- Access detailed and interactive content to enhance study skills, explore degree options and enrich subject-specific knowledge to approach end-of-year exams and Year 12 with confidence
- Gain a greater understanding of the UNSW Gateway Admission Pathway
- Enhance study with access to the InspirationED HSC4ME app to further support their academic confidence
- Gain the opportunity to receive free online tutoring in a chosen subject

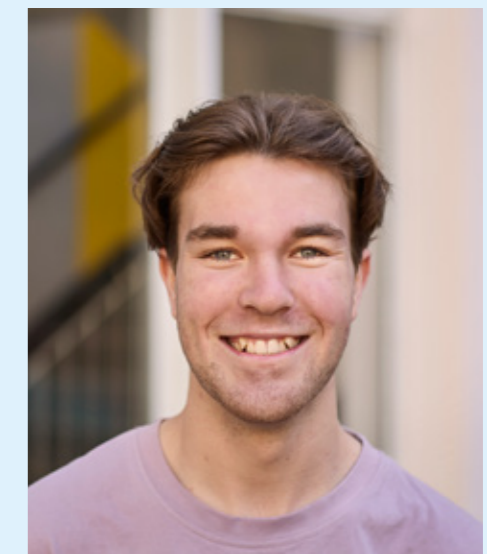
On-campus Day

10 July, UNSW Kensington Campus

Students come to UNSW campus to engage in interactive faculty-led sessions to explore degrees of interest, participate in subject masterclasses led by experienced HSC markers, and join workshops on leadership and personal storytelling facilitated by current university students.

Learning outcomes:

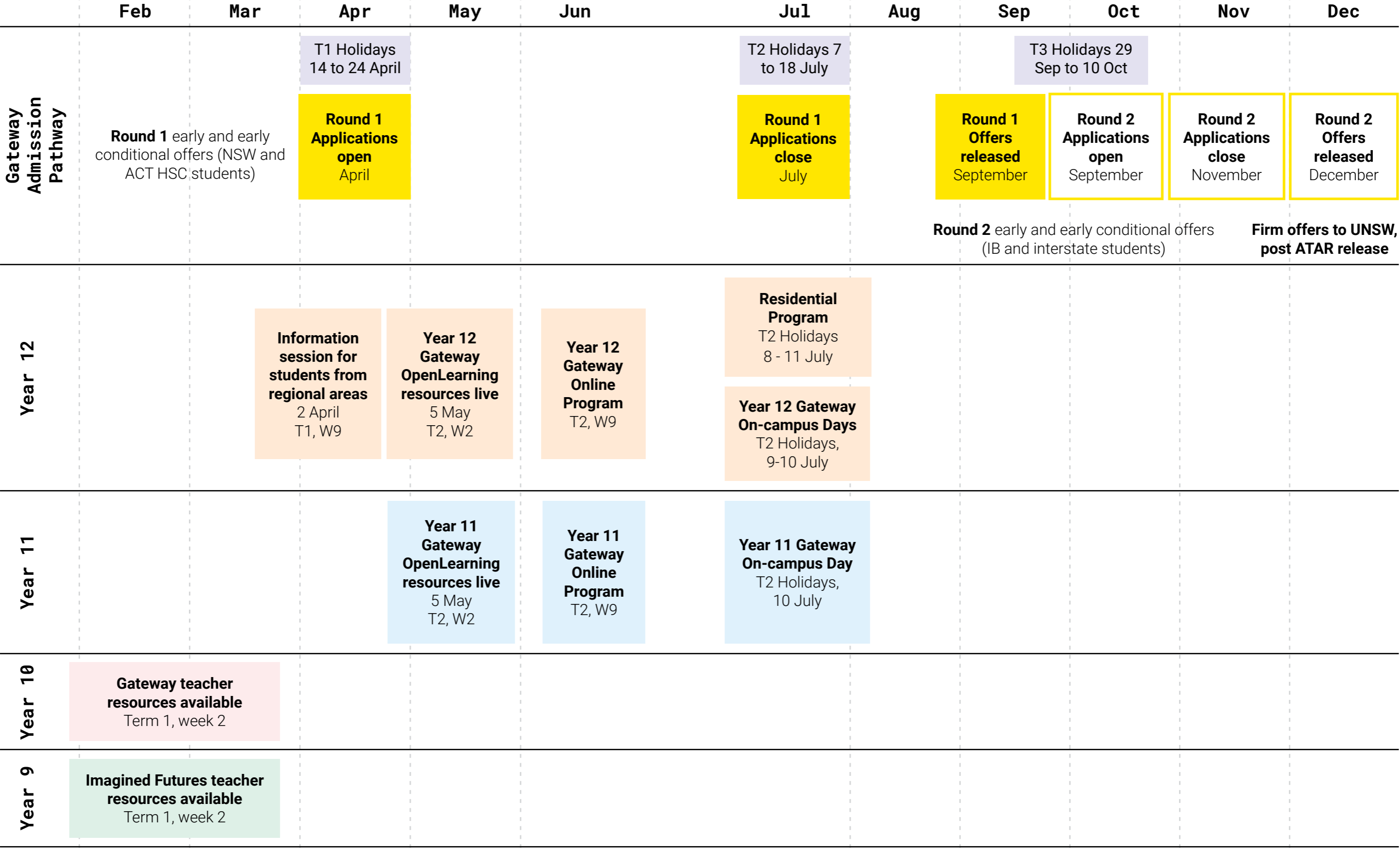
- Discover campus and hear about life at UNSW on a guided tour led by current university students
- Explore UNSW faculties and degrees
- Enhance critical, creative and leadership skills in workshops that prepare students for Year 12 and beyond
- Connect with current university students to hear first-hand about the transition from high school to university



“Neither of my parents had been to uni, and the job market in Guyra wasn’t thriving. But my idea of creating a better life was “I’m going to uni”. It didn’t matter how or when. I wanted to be successful and I could see that uni was a pathway to set myself up. That was my main motivation.”

Joseph Stanley
Guyra Central School / O’Connor Catholic College, Bachelor of Arts

Timeline and key dates



2025 Gateway partner schools

Schools on this list are eligible for the Gateway Admission Pathway and Program.

A

Airds High School	2560
Ajuga School	2167
Al Amanah College	2170
Al Sadiq College	2190
Albion Park High School	2527
Albury High School	2640
Alesco Secondary College	2300
Alstonville High School	2477
Ambarvale High School	2560
Ardlethan Central School	2665
Ariah Park Central School	2665
Armidale Secondary College	2350
Arthur Phillip High School	2150
Ashcroft High School	2168
Ashford Central School	2361
Auburn Girls' High School	2144
Australian Christian College Singleton	2330

B

Ballina Coast High School	2478
Balranald Central School	2715
Bankstown Girls' High School	2200
Bankstown Senior College	2200
Banora Point High School	2486

Baradine Central School	2396
Barellan Central School	2665
Barham High School	2732
Barraba Central School	2347
Bass High School	2197
Batemans Bay High School	2536
Batlow Technology School	2730
Bede Polding College	2756
Bega High School	2550
Bellfield College	2557
Bellingen High School	2454
Belmont High School	2280
Belmore Boys' High School	2192
Bethel Christian School	2770
Beverly Hills Girls' High School	2209
Bhaktivedanta Swami Gurukula School	2484
Billabong High School	2660
Bingara Central School	2404
Binnaway Central School	2395
Birrong Boys' High School	2143
Birrong Girls' High School	2143
Blacktown Girls' High School	2148
Blacktown Youth College Incorporated	2770
Blayney High School	2799
Blue Hills College	2480

Boggabilla Central School	2409
Bomaderry High School	2541
Bombala High School	2632
Bonalbo Central School	2469
Bonnyrigg High School	2177
Boorowa Central School	2586
Bossley Park High School	2176
Bourke High School	2840
Bowral High School	2576
Bowraville Central School	2449
Braidwood Central School	2622
Brewarrina Central School	2839
Brisbane Water Secondary College Woy Woy Campus	2256
Broken Hill High School	2880
Bulahdelah Central School	2423
Bundarra Central School	2359

C

Cabramatta High School	2166
Callaghan College Jesmond Senior Campus	2299
Cambridge Park High School	2747
Camden Haven High School	2443
Camden High School	2570
Campbelltown Performing Arts High School	2560
Canley Vale High School	2166

Canobolas Rural Technology High School	2800
Canowindra High School	2804
Canterbury Boys' High School	2193
Cardiff High School	2285
Casino Christian School	2470
Casino High School	2470
Casula High School	2170
Cecil Hills High School	2171
Cessnock High School	2325
Chatham High School	2430
Chester Hill High School	2162
Chifley College Bidwill Campus	2770
Chifley College Senior Campus	2770
Cobar High School	2835
Coffs Harbour High School	2450
Coleambally Central School	2707
Collarenebri Central School	2833
Colo High School	2754
Colyton High School	2760
Condell Park High School	2200
Condoblin High School	2877
Coolah Central School	2843
Coolamon Central School	2701
Coomealla High School	2717
Coonabarabran High School	2357
Coonamble High School	2829
Cootamundra High School	2590
Corowa High School	2646
Corrimal High School	2518
Cowra High School	2794
Craig Davis College	2526
Cranebrook High School	2749
Crookwell High School	2583

D

Dapto High School	2530
Delany College	2142
Deniliquin High School	2710
Denison College of Secondary Education, Bathurst High Campus	2795
Denison College of Secondary Education, Kelso High Campus	2795
Doonside High School	2767
Dorrigo High School	2453
Dubbo College Senior Campus	2830
Dubbo School of Distance Education	2830
Dunedoo Central School	2844
Dungog High School	2420
Dunlea Centre, Australia's Original Boys' Town	2233

E

Eagle Vale High School	2558
East Hills Boys' High School	2213
East Hills Girls' Technology High School	2213
EDEN College	2564
Eden Marine High School	2551
Elderslie High School	2570
Elizabeth Macarthur High School	2567
Emmaus Catholic College	2178
Emmaville Central School	2371
Erina High School	2250
Erskine Park High School	2759
ET Australia Secondary College	2250
Evans High School	2148
Evans River Community School	2473

F

Fairfield High School	2165
Fairvale High School	2165
Figtree High School	2525
Finley High School	2713
Five Islands Secondary College	2505
Forbes High School	2871
Francis Greenway High School	2322

G

Georges River College Oatley Senior Campus	2223
Gilgandra High School	2827
Glen Innes High School	2370
Glendale Technology High School	2285
Glenmore Park High School	2745
Gloucester High School	2422
Good Samaritan Catholic College	2168
Goodooga Central School	2838
Gorokan High School	2263
Goulburn High School	2580
Grafton High School	2460
Granville Boys' High School	2142
Granville South Creative and Performing Arts High School	2161
Great Lakes College Senior Campus	2428
Greystanes High School	2145
Gulgong Central School	2828
Gulgong High School	2852
Gundagai High School	2722
Gunnedah High School	2380
Guyra Central School	2365

H

Hastings Secondary College, Port Macquarie Campus	2444
Hastings Secondary College, Westport Campus	2444
Hawkesbury High School	2756
Hay War Memorial High School	2711
Heathcote High School	2233
Hennessy Catholic College	2594
Heritage Christian School	2444
Hillston Central School	2675
Holroyd High School	2145
Holsworthy High School	2173
Holy Spirit Catholic College	2195
Hoxton Park High School	2168
Hunter River High School	2324
Hunter Sports High School	2290
Hunter Trade College	2320

I

Illawarra Sports High School	2506
Indie School Albury	2640
Ingleburn High School	2565
Inverell High School	2360
Irrawang High School	2324
Ivanhoe Central School	2878

J

J J Cahill Memorial High School	2020
James Busby High School	2168
James Cook Boys' High School	2217
James Fallon High School	2640
James Meehan High School	2564
Jamison High School	2750
John Edmondson High School	2171
John Therry Catholic College	2560
Junee High School	2663

K

Kanahooka High School	2530
Kandos High School	2848
Karabar High School	2620
Kariong Mountains High School	2250
Keira High School	2519
Kempsey Adventist School	2440
Kempsey High School	2440
Kingscliff High School	2487
Kingsgrove High School	2208
Kingsgrove North High School	2208
Kingswood High School	2747
Kogarah High School	2217
Koorngal High School	2650
Kurri Kurri High School	2327
Kyogle High School	2474

L

La Salle Academy	2790
La Salle Catholic College	2200
Lake Cargelligo Central School	2672
Lake Illawarra High School	2528
Lake Macquarie High School	2284
Lake Munmorah High School	2259
Leeton High School	2705
Leumeah High School	2560
Lightning Ridge Central School	2834
Lisarow High School	2250
Lithgow High School	2790
Liverpool Boys' High School	2170
Liverpool Girls' High School	2170
Lockhart Central School	2656
Lurnea High School	2170

M

Macintyre High School	2360
Macksville High School	2447
Macleay High School	2463
Macleay Vocational College	2440
Maitland Grossmann High School	2323
Maitland High School	2323
Manilla Central School	2346
Manning Valley Anglican College (Cundletown)	2430
Marian Catholic College (Griffith)	2680
Maronite College of the Holy Family - Parramatta	2150
Mary MacKillop Catholic College	2176
Matraville Sports High School	2036
McCarthy Catholic College	2340
Melville High School	2440
Mendooran Central School	2842
Menindee Central School	2879
Merriwa Central School	2329
Merrylands High School	2160
MidCoast Christian College	2430
Miller High School	2168
Minarah College	2168
Mitchell High School	2148
Molong Central School	2866
Monaro High School	2630
Moorebank High School	2170
Moorefield Girls' High School	2217
Moree Secondary College	2400
Morriset High School	2264
Moruya High School	2537
Moss Vale High School	2577

Mount Annan High School	2567
Mount Austin High School	2650
Mount View High School	2325
Mountain View Adventist College	2767
Mountains Christian College	2785
Mudgee High School	2850
Mulwaree High School	2580
Mungindi Central School	2406
Murray High School	2641
Murrumbidgee Regional High School	2680
Murrumbidgee Regional High School Wade	2680
Murrumburrah High School	2587
Murwillumbah High School	2484
Muswellbrook High School	2333

N

Nambucca Heads High School	2448
Narara Valley High School	2250
Narooma High School	2546
Narrabri High School	2390
Narrandera High School	2700
Narromine High School	2821
Nepean Creative and Performing Arts High School	2750
Newman Senior Technical College	2444
Nimbin Central School	2480
Northlakes High School	2262
Nowra High School	2541
Nyngan High School	2825

O

Oak Flats High School	2529
Oaklands Central School	2646
Oberon High School	2787
OneSchool Global NSW	2117
OneSchool Global NSW - Albury	2640
OneSchool Global NSW - Armidale	2350
OneSchool Global NSW - Condobolin	2877
OneSchool Global NSW - Goulburn	2580
OneSchool Global NSW - Illawarra	2508
OneSchool Global NSW - Leeton	2705
OneSchool Global NSW - Maitland	2323
OneSchool Global NSW - Mount Victoria	2786

OneSchool Global NSW - Orange	2800
OneSchool Global NSW - Wagga Wagga	2650
Oran Park High School	2570
Orange High School	2800
Orara High School	2450
Oxley High School	2340

P

Pacific Coast Christian School	2486
Pacific Valley Christian School	2463
Pal Buddhist School	2166
Parkes Christian School	2870
Parkes High School	2870
Patrician Brothers' College Blacktown	2148
Patrician Brothers' College Fairfield	2165
Peak Hill Central School	2869
Peel High School	2340
Pendle Hill High School	2145
Picnic Point High School	2213
Picton High School	2571
Plumpton High School	2761
Portland Central School	2847
Prairiewood High School	2176
Punchbowl Boys' High School	2196

Q

Quakers Hill High School	2763
Queanbeyan High School	2620
Quirindi High School	2343

R

Red Bend Catholic College	2871
Richmond High School	2753
Riverstone High School	2765
Robert Townson High School	2566
Rooty Hill High School	2766
Rutherford Technology High School	2320

S

Salamah College	2162
Sarah Redfern High School	2566
Scone High School	2337
Sefton High School	2162
Seven Hills High School	2147
Shoalhaven High School	2541
Shoalhaven River College	2541
Singleton High School	2330
Sir Joseph Banks High School	2212
Skillset Senior College	2795

South Grafton High School	2460
South Sydney High School	2035
Southern Cross School of Distance Education	2478
St Agnes Catholic High School	2766
St Andrew's Christian School	2460
St Bishoy Coptic Orthodox College	2770
St Brigid's Catholic College	2259
St Catherine's Catholic College	2330
St Clair High School	2759
St Clare's Catholic High School	2761
St Johns Park High School (St Johns Park)	2176
St Joseph's College	2321
St Joseph's High School (Aberdeen)	2336
St Mary and St Mina's Coptic Orthodox College (Bexley)	2207
St Mary's Catholic College (Casino)	2470
St Mary's College	2380
St Narsai Assyrian Christian College	2175
St Paul's College	2440
St Philip's Christian College Young Parents	2298
St Raphael's Catholic School	2794
Strathfield South High School	2136
Swansea High School	2281

T

Tamworth High School	2340
Taree High School	2430
Temora High School	2666
Tenterfield High School	2372
The Henry Lawson High School	2810
The Hills Sports High School	2147
The Rivers Secondary College, Kadina High Campus	2480
The Rivers Secondary College, Lismore High Campus	2480
The Rivers Secondary College, Richmond River High Campus	2480
The Rock Central School	2655
Thomas Reddall High School	2560
TLK Youth College	2261
Tomaree High School	2317
Tooleybuc Central School	2736
Toormina High School	2452
Toronto High School	2283
Tottenham Central School	2873
Trangie Central School	2823
Trinity Catholic College	2144
Trundle Central School	2875

Tuggerah Lakes Secondary College The Entrance Campus	2261
Tullamore Central School	2874
Tullibigeal Central School	2669
Tumbarumba High School	2653
Tumut High School	2720
Tweed River High School	2486

U

Ulladulla High School	2539
Ungarie Central School	2669
Uralla Central School	2358

V

Vincentia High School	2540
-----------------------	------

W

Wadalba Community School	2259
Wagga Wagga High School	2650
Walcha Central School	2354
Walgett Community College High School	2832
Warakirri College	2165
Waranara School	2017
Warialda High School	2402
Warilla High School	2528
Warrawong High School	2502
Warren Central School	2824
Wauchope High School	2446
WAYS Secondary	2026
Wee Waa High School	2388
Wellington High School	2820
West Wallsend High School	2286
West Wyalong High School	2671
Westfields Sports High School	2165
Wilcannia Central School	2836
Wiley Park Girls' High School	2196
Willyama High School	2880
Windsor High School	2756
Wingham High School	2429
Wollumbin High School	2484
Woniora Road School	2220
Woodenbong Central School	2476
Woolgoolga High School	2456
Wyndham College	2763
Wyong High School	2259

X

Xavier College	2747
----------------	------

Y

Yanco Agricultural High School	2703
Yass High School	2582
Yeoval Central School	2868
Young High School	2594



gateway.unsw.edu.au
unswgateway@unsw.edu.au

CRICOS 00098G