



UNSW
SYDNEY

Australia's
Global
University

UNSW Engineering Welcome Guide 2020

**GET READY TO
MAKE A DIFFERENCE!**

Welcome





WELCOME FROM STUDENT AMBASSADOR AND FORMER ENGSOC PRESIDENT **ANDY WANG**

Coming into uni as a first year student can be daunting. When I started studying at UNSW I was taken aback by the change in pace, learning style, and the sheer number of people around. In due time, thanks to the guidance of older students and helpful staff I settled in and took advantage of countless opportunities. There is no shortage of things you can get involved in, and you may even find that by the end of your degree you wish you had more time!

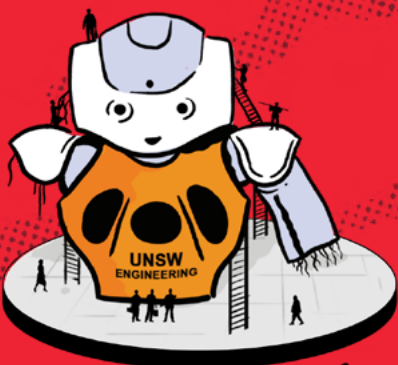
This guide aims to be a starting place, providing essential info on academics, important contact details, and tips on how to get the most out of your first year. Use this guide as a springboard to find out more information on something you're interested in, like Student Projects and Societies. UNSW Engineering provides a diverse array of opportunities and these are just two.

There is no shortage of opportunities outside of Engineering either– whether it comes from Arc (via their volunteering programs, clubs, or sports) or in the broader uni community. By getting involved you can meet new people and make lifelong friends whilst having fun and growing as a person.

Everyone goes through this experience as a first year student so don't be afraid to ask for help. The uni journey is what you make of it so dive right in and make the most of this year!

Good luck and go conquer!

Andy
5th year Chemical Engineering student
and Student Ambassador



GETTING STARTED

THE CHALLENG PROGRAM

From your second year join a project in the **Challeng Program!**

Remember to save your first-year electives so you can be part of the program in second year. The program connects students, academics and industry to exciting real-world project-based learning initiatives.

PREPARE FOR INDUSTRIAL TRAINING

As part of your degree you are required to complete 60 days of Industrial Training. Start the journey [here](#).

DON'T MISS WHAT'S HAPPENING... STAY IN TOUCH

So you don't miss amazing opportunities like applying for the Student Ambassador roles, employment or international travel programs keep engaged via the below channels:

- ENGScope newsletter – Emailed to your student email every second Tuesday during term
- Engineering Student page on the website – **Check it out**
- Engineering Student Info page via Moodle

10 MOST IMPORTANT STEPS

1. Enrol in courses – for more information please visit the **Getting Started website**
2. **Get a student ID card**
3. Access **UNSW email**
4. Complete the **compulsory ELISE quiz**
5. Make a booking to do your **Makerspace Safety Induction Badge** (a must for ENGG1000)
6. Follow **UNSW Engineering on Facebook**
7. Attending **Engineering Welcome during O'Week**
8. **Visit the wellbeing, health and safety page** that offer a heap of support services that you can access
9. **Checkout the UNSW Handbook**, your guide throughout your degree for subject selection
10. Any questions? **Visit the Nucleus: Student Hub**



UNSW Students and Staff built and participated in the 2019 Mardi Gras Parade



KEY DATES NOT TO MISS

Key dates for enrolment, census and exams can be found [here](#).

A simplified view of semester, exam, and term break dates can be seen via the academic calendar.

Moodle

Moodle is an online learning platform that is used to deliver your courses. You will access lecture recordings, tutorial notes and course materials through this site throughout your degree. For Moodle support click [here](#)

The Nucleus: Student Hub

The Nucleus provides essential services, such as your student ID card and program deferrals.

Visit nucleus.unsw.edu.au/contactus for more information.

Engineering Student Support Services

The Nucleus: Student Hub - Engineering Student Services

Location: Library, Level 2 (Ground Floor)

Opening Hours: 9am – 5pm Monday to Friday

Tel: Ph: +61 2 9385 8100

Enquiry: unsw.to/webforms

Got questions? [Go the FAQ's page](#)

Useful Terminology–Lingo

Program = Degree e.g Bachelor of Engineering (Mechanical & Manufacturing Engineering)

Plan = Specialisation - e.g Mechatronic Engineering or Aerospace Engineering

Course = Subject – e.g ENGG1000, MATH1131 or PHYS1121

Checkout the UNSW Handbook

This is your guide to your program, specialisation and courses throughout your degree. It specifies which courses you must complete, and if applicable, in which year. It also provides information on electives and general education subjects on offer, as well as other requirements such as industrial training.

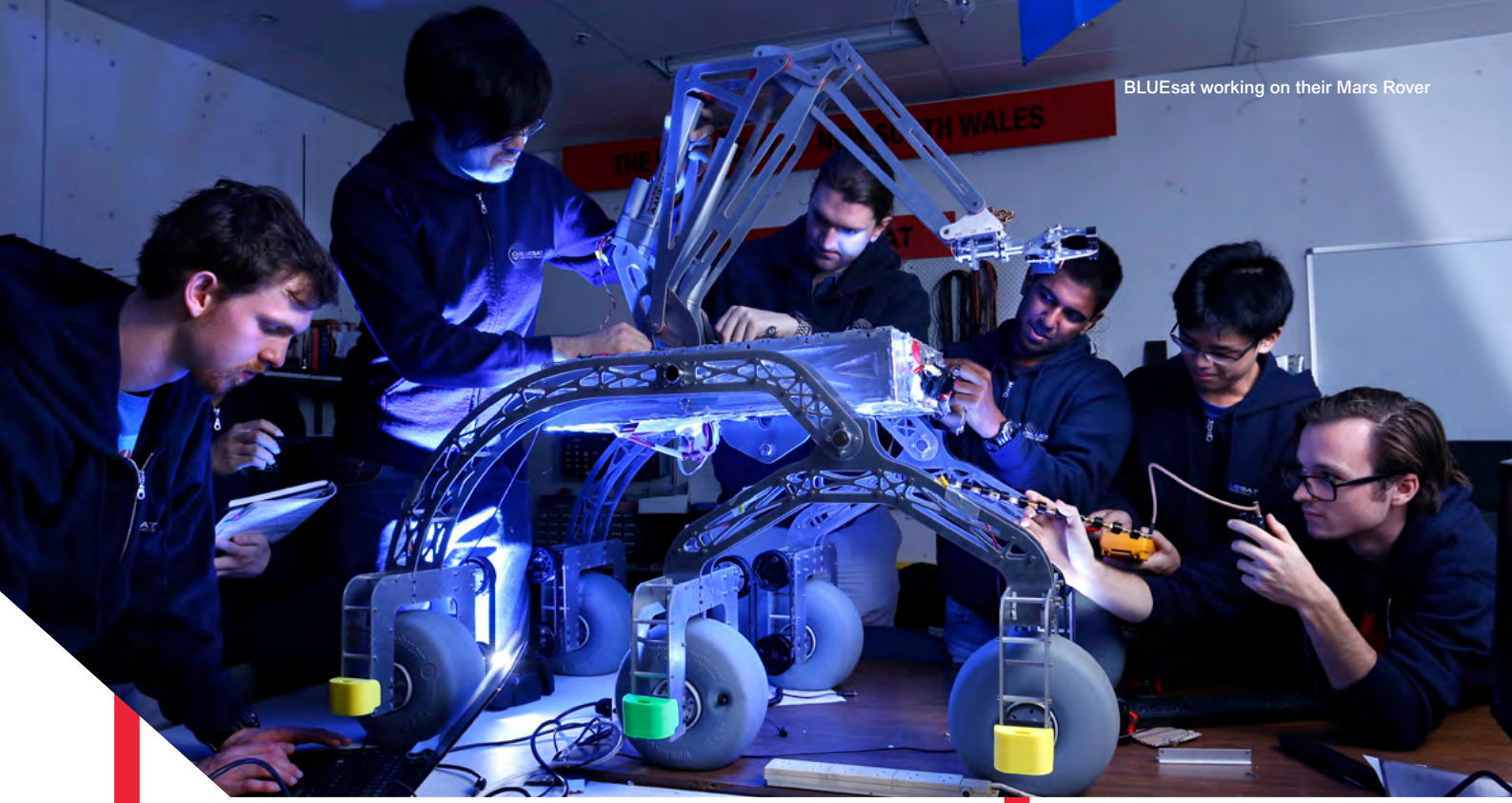
► www.handbook.unsw.edu.au

Flexible First Year

Are you a Flexible First Year Student?
Then check out [this page](#).

Elective Courses

Want to check out the Elective Courses on offer [click here](#).



Creating your timetable

Enrolling involves not only selecting which courses (i.e. subjects) to enrol in, but also which times to attend for each of your lectures, tutorials and labs.

Sometimes you will have a long list of times to choose from and sometimes there will be only one choice.

Plan your next terms using online tool CrossAngles.

CrossAngles allows you to drag, drop and move around class times to make the perfect timetable for you -whether that means less days at uni, sleeping in, or more breaks within classes.

► <https://crossangles.app/>

Useful Apps

Timeweave allows you to import your UNSW class timetable and see all your friends' timetables. It's handy for when you want to schedule lunch/coffee with friends, or just have an hour free between classes and want some company.

Lost on Campus provides a map of campus buildings and room, as well as essential amenities like microwaves. A must have for students unfamiliar with the campus.

YOU ARE ALWAYS EXPECTED TO MANAGE YOUR OWN ENROLMENT AND CLASS SCHEDULE.

REMEMBER IF YOU WANT TO JOIN THE CHALLENG PROGRAM FROM YOUR SECOND YEAR YOU NEED TO PLAN TO SAVE ELECTIVE SPACE IN YOUR DEGREE.



UNSW SERVICES

UNSW Health, Wellbeing and Safety

► <https://student.unsw.edu.au/wellbeing>

The UNSW Health, Wellbeing and Safety provides a free and confidential service to all students. A range of services are offered:

- Counselling for individuals
- Orientation to UNSW and the University experience
- Motivational support
- Seminars & workshops to enhance student success
- Personal skills development
- Self-help resources to develop personal and academic effectiveness
- Advisory services for staff & students
- Self-help resources to develop personal & academic effectiveness

Location: Level 2, East Wing, Quadrangle (Map Ref E17)

Tel: +61 (2) 9385 5418 **Email:** counselling@unsw.edu.au

Opening Hours: Monday to Thursday, 9:00am - 5:00pm

Student Academic & Career Success

► <http://www.careers.unsw.edu.au/>

Careers and Employment provide services to assist students in the development of career management skills. These include workshops, online job search facilities, careers expos and one-on-one assistance to help with resumes and interview techniques. Sign up for their free fortnightly e-Newsletter service for upcoming events and current job opportunities..

Location: Learning & career Hub, Lower Ground Morven

Brown, LG66 (near Boost Juice) **Tel:** +61 (2) 9385 5429

Email: careers@unsw.edu.au

The Student Equity and Disabilities Unit

► <https://student.unsw.edu.au/els>

The Equity and Diversity Unit provides advice and assistance for students to have a fair and equitable opportunity to fully participate and succeed in their studies. The unit offers educational support and programs for any student who:

- Managing a disability, health or learning difficulty, or is studying under difficult personal circumstances such as a career, single parent looking after a child with a disability or student in day release program
- Lives in regional or remote New South Wales
- Has the potential to succeed at university, but has never been encouraged to think about going belongs to a minority group
- Has encountered harassment or anti-discrimination from another student or staff member while on campus.

Location: Ground Floor, John Goodsell Building (Map Ref

F20) **Tel:** +61 (2) 9385 4734 **Email:** els@unsw.edu.au

Opening Hours: Monday - Friday, 10.00am – 4.00pm



CONNECT WITH US

There are lots of ways to get involved at UNSW Engineering, but make sure you don't miss out! To stay informed, watch out for the following:

EngScope newsletter

Every second Tuesday during term time you'll receive the EngScope newsletter, brought to you by the UNSW Engineering Society. The newsletter includes lots of useful content like:

- Lots of events to get involved with
- Internship and job opportunities
- A student blog and news article
- Special announcements from UNSW and the Faculty of Engineering

FOLLOW US ON SOCIAL MEDIA!

UNSW Engineering socials

-  UNSW Engineering
-  UNSWengineering
-  UNSWEngineering

UNSW socials

-  UNSW
-  UNSW

“JOIN FACEBOOK GROUPS FOR ALL YOUR COURSES! GREAT PLACE FOR HELP, TIPS AND MAYBE EVEN ANSWERS.”

Dinesh Ratnam
3rd year Aerospace Engineering student

ENGSCOPE!
DON'T IGNORE THIS
EMAIL!! IT'S YOUR
DIRECT SOURCE
OF ALL NEWS
ENGINEERING,
JOBS, AND
INTERNSHIPS!!

Check your emails!

Your student email is where all UNSW communication will be sent to including notifications from your lecturers and communications from the Faculty of Engineering. It is recommended that you check your student email on a regular basis. You can access instructions on how to access your student email can be seen via the following link:

► <https://student.unsw.edu.au/emails>

Website

Heaps of info here to check out! – Engineering student page

► <https://www.engineering.unsw.edu.au/students>

JOIN THE CHALLENG PROGRAM

Choose Your Challenge and start to change the world!

The Challenge program will prepare you for your future career by providing a long term and interdisciplinary approach to learning, which will give you hands on technical experience and expand your professional skills! You will get real world experience and connected to researchers & companies, while also getting your deserved academic credit!

[Learn more.](#)



Challenge yourself to work on research that changes the world

Curious about research? Immerse yourself in a unique project-based research opportunity where you can apply what you have learnt in your degree to real-world engineering research challenges. Experience innovation in action in a multi-disciplinary team with other like-minded engineers and gain highly sought after technical and professional skills that you can apply to your engineering career in the future.

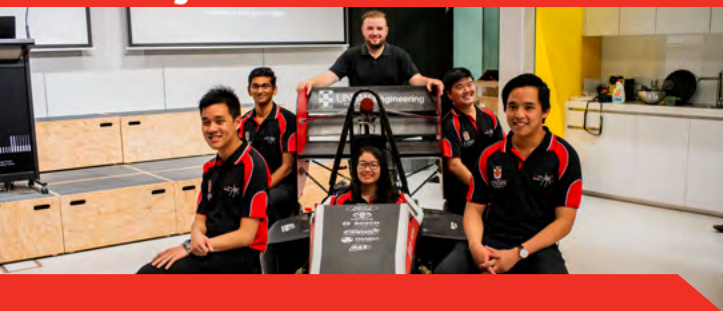
[More](#)



Work with industry to solve their Challenge

Up for a Challenge? Experience an exclusive, prototyping competition where you can work with other students to solve real world challenges currently faced by industry. Develop your skills in design thinking and product development by bringing an innovative solution to life through a working prototype.

[More](#)



Student competitions that are a real Challenge

Got a competitive side? Engage in student projects such as Redback Racing Team and work in multi-disciplinary teams with other engineers to achieve competition goals. Enhanced learning experiences and the opportunity to make lifelong friendships, plus travel internationally and develop career networks.

[More](#)



Help solve a Challenge for a community in need

A little goes a long way! Through projects such as Engineering World Health and Impact Engineering you can help people and communities in need. While giving back, you'll also experience the added benefits of academic mentors, amazing learning experiences and of course the opportunity to make lifelong friends.

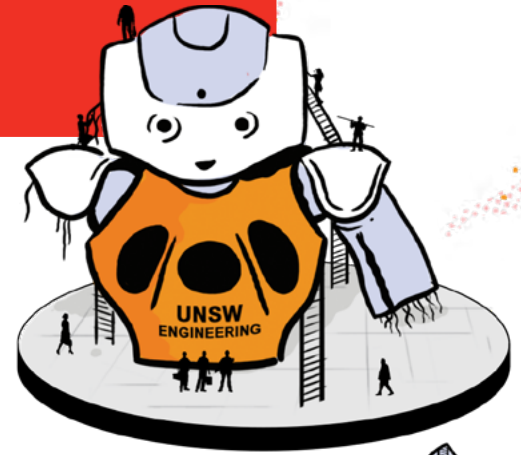
[More](#)



EARN ACADEMIC CREDIT OR INDUSTRIAL TRAINING

AS THE CHALLENG PROGRAM IS AN ELECTIVE COURSE WE ENCOURAGE STUDENTS TO SAVE THEIR FIRST-YEAR ELECTIVE FOR THEIR SECOND OR THIRD YEARS.

JOIN ONE OF THESE EXCITING PROJECTS AND SECURE YOUR FUTURE CAREER!



AT A GLANCE

The courses in The Challeng Program are for credit electives.

The course codes are: [ENGG2600](#), [ENGG3600](#) and [ENGG4600](#)

The courses run across three consecutive terms in 2020: T1,2 and 3 (2 UoC per Term) for a total of 6 UoC at the end, which enables students to extend their project-based learning experience beyond a single semester

Students on enrol for up to 20 UoC per term if they wish without having to apply for overload approval.

You must complete all three terms of the course and satisfy all the assessment requirements as set out by the course coordinator to receive full course credit. Partial credits will not be given. Check out how it all works here:

► <https://www.challeng.unsw.edu.au/students/how-it-works>

THERE ARE
NO EXAMS

THE PROJECTS
IN THE CHALLENG
PROGRAM ARE
ASSESSMENT
BASED!

STUDENT SOCIETIES

Want to make new friends, gain new skills and work as part of a team? There are hundreds of student societies at UNSW to get involved in! Below is a list of the student societies for the Faculty of Engineering and its schools. Like them on Facebook and get involved in their programs and events!

“CHECK OUT AND JOIN ALL THE AVAILABLE SOCIETIES, STUDENT PROJECTS AND CLUBS DURING O-WEEK! A GREAT WAY TO MAKE SOME FRIENDS, DO SOME NETWORKING AND GET INVOLVED OUTSIDE OF YOUR DEGREE. MY ADVICE WOULD BE TO JOIN A BUNCH IN YOUR 1ST YEAR AND THEN YOU CAN COMMIT TO A FEW AFTER YOUR TASTE TEST!”

Erisha Chand
3rd year Mechatronic Engineering Student



Engineering Society

► <https://www.facebook.com/groups/unswengsoc/>



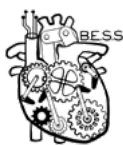
Women in Engineering Society

► <https://www.facebook.com/wieunsw/>



Engiqueers

► <https://www.facebook.com/EngiqueersUNSW/>



Biomedical Engineering Student Society

► <https://www.facebook.com/UNSWBESS/>



Chemical Engineering Undergraduate Society

► <https://www.facebook.com/ceus.unsw/>



Civil and Environmental Engineering Society

► <https://www.facebook.com/cevsoc/>



Computer Science and Engineering Society

► <https://www.facebook.com/csesoc/>



Electrical Engineering Society

► <https://www.facebook.com/eeunsw/>



Mechanical Engineering Society

► <https://www.facebook.com/UNSWMECHSOC/>



Mineral and Energy Resources Engineering Society

► <https://www.facebook.com/UNSWMERESOC/>



Society for Photovoltaic and Renewable Energy Engineers

► <https://www.facebook.com/groups/resoc.unsw/about/>

GET READY FOR INDUSTRIAL TRAINING!

As part of your degree, you are required to complete 60 days of Industrial Training.

Industrial Training (IT) is professional work experience that is related to your engineering specialisation. IT allows you to explore different careers, apply classroom theory to real-life work situations and gain professional engineering experience before you graduate. It's really important to get started as soon as possible – not completing 60 days of IT will delay your graduation.

So how do you get started?

1. Read this Student Guide. It has everything you need to know about the Industrial Training Program.
[Industrial Training Student Guide](#)
2. Enrol into the Industrial Training Moodle Site and have a look around! This Moodle site is your one-stop-shop for the Industrial Training Program.
[Industrial Training Moodle course](#)



Enrolment Key
= **Eng5student**

QUESTIONS?

Contact the Industrial Training Office!

Email: eng.wil@unsw.edu.au

Phone: (02) 9385 7661

Location: Ground Floor, Computer Sciences Building (K17).

Open for in-person enquiries
Mon-Thur 12-2pm.

► unsw.to/eng_industrialtraining

WOMEN IN ENGINEERING PROGRAM

**BECOME PART OF
OUR COMMUNITY**

Women in Engineering Student Society (WIESoc)

▶ facebook.com/wieunsw/

With more than 2000 members from a diverse range of engineering disciplines, WIESoc provides female engineering students with a broad range of events and activities to build friendships and develop skills while studying. These include a packed social calendar (with games nights, cocktail events and annual WIESoc Ball), a sought-after mentorship program and multiple industry events from speed networking to design challenges.

Opportunities for our Female students

Keep an eye on the Opportunities for Current Students on our website [here](#)

The WIESOC Industry Mentoring Program

A wonderful program providing our female students the opportunity to directly connect with industry representatives through one-on-one mentorship. The program runs from April to October each year with check-in event throughout the year. For further info contact:

▶ industrymentoringprogram@wiesoc.com

Follow Women in Engineering on LinkedIn

▶ linkedin.com/groups/6988186/



“ THROUGHOUT MY INVOLVEMENT IN THE WIE DEVELOPMENT PROGRAM, I CONTINUE TO BE IMPRESSED BY THE EFFORT UNSW PUTS INTO ENCOURAGING WOMEN TO PURSUE ENGINEERING, ALLOWING US TO GRASP NEW AND INTERESTING OPPORTUNITIES THAT EQUIP US WITH SKILLS FOR THE FUTURE. ”

Karen Kuan
Civil Engineering and Architecture student



MAKER SPACES

“REALLY EMBRACE OUR UNIQUE MAKER CULTURE. THE MAKERSPACES GIVE YOU ACCESS TO TOP OF THE LINE TOOLS AND MACHINERY TO BUILD WHATEVER YOU CAN IMAGINE.”

Dylan Sanusi-Goh
2nd year Computer Science and Engineering student

UNSW Engineering has three Makerspaces on campus covering everything from electronics, 3D printing, laser cutting, woodworking and metalwork. The Makerspaces are open to ALL students and we encourage you to drop by anytime and get involved.

The first step is registering on the UNSW Making website, <https://www.making.unsw.edu.au/>

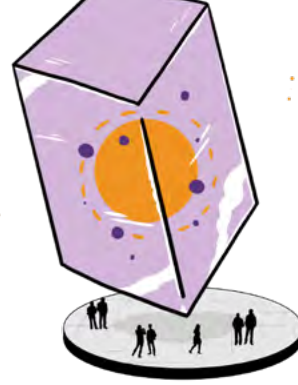
Our Makerspaces are places where you can work on course work, student projects or your own personal project and we provide free training for all equipment. We encourage sharing of ideas, collaboration and community.

One of the best things about our Makerspaces are the extended opening hours, we are open from **10am – 9pm Monday – Friday and 10am – 6pm Saturdays.**

Everything you need know including maps, training and opening hours can be found at www.making.unsw.edu.au/.

We run a Makerspace Volunteer Program (MVP) that starts in Term 2, if you're interested please drop by for a chat with any of our friendly Makerspace Ambassadors who have all been volunteers in the program. You can't miss them wearing their bright pink "UNSW Making" t-shirts.

HANDY HINTS



How to get to Uni:

1. An express bus service (891) runs from Central Station to UNSW.
2. The bus line in the morning is ridiculous! Plan for it or organise afternoon classes.
3. If you're driving to UNSW, make sure you arrive early to get a parking spot near campus and minimise the walk. Parking at gate 14 is expensive and a parking fine is worse!
4. Trip view app: An absolute must for all commuters. Find in the app store.
5. Follow the link to get details for other buses and transportation options:

► gettingstarted.unsw.edu.au/maps-and-public-transport

Food:

UNSW has no shortage of food and coffee joints. If you're on lower campus, Stellini Pasta Bar offers a wide range of tasty pastas, or you can visit Guzman Y Gomez for a burrito. On upper campus, Subway and Boost offer familiarity, or you can check out Southern Wok for a wide range of noodle and rice dishes. The Mathews food court offer a variety of cuisines from Indian to Japanese. If you're in the middle, visit Q-Lounge to mix and match your own lunch (there are always lines during lunch time!), or check out the daily deals at the Whitehouse (\$10 Schitty on Wednesdays!). After class you can hit the Roundhouse for happy hour drinks with your mates.

WH Smith:

The one-stop-shop for all stationery, lab needs and workbooks! Prices aren't too bad either!

Located at the Quad (next to Q-Lounge) or at the top of the Basser Steps (near Boost).

IGA:

Just under the university terraces, IGA has all the snack you could need

Other Services

We have banks, an Australia Post outlet, pharmacy, STA Travel and the UNSW Health Service.

See the full list of food and retail outlets on campus here:

► <https://bacs.unsw.edu.au/property/retail>

Campus Map:

1. UNSW is big, confusing and busy... the campus map is your best friend. Download and highlight your classes before day 1! Some of us even highlighted what looks to be a suitable path.
2. O-week campus tours run by the Yellow Shirt leaders are a sure-fire way to get familiar with campus!
3. You must download lost on campus (app) before day 1!!

Map out the route to your class beforehand, so you're not walking in late in front of everyone.

Campus Map:

► <http://fmtoolbox.unsw.edu.au/comms/KensingtonCampus.pdf>

Student support groups

This is a BIG one (trust us!). Whilst your lectures are great, it's your classmates that get us through each course.

Join the Facebook page AND group chat for each of your courses. Here you can ask questions, get reminded of due dates, get solutions and hints for quizzes and even get week by week revision notes from some of the best and brightest!

☞ **COFFEE LOVERS! BRING A KEEP-CUP TO SAVE 50¢ AND THE ENVIRONMENT AT MOST CAFES ON CAMPUS.**

TEXTBOOKS COST AN ARM AND A LEG. UNLESS YOUR LECTURER SPECIFICALLY ADVISES, DON'T BUY TEXTBOOKS BEFORE YOU START UNI! ALSO, ALWAYS CHECK FOR LEGAL ONLINE COPIES BEFORE HITTING UP THE BOOKSHOP. ☞☞

Isabella Notarpietro
2nd year Chemical Engineering student

STUDY HINTS!

University life is busy. Hedge your bets and maximise your marks!

1. **Every percentage counts:** Every percentage counts: DO NOT slack on any weighted work. Whether it is an 8% maple coding test or a 1% weekly MMAN1300 quiz, do it and do it well. It might seem tedious but come end of term exams, having the comfort of an extra 15% you've grinded for during the semester not only reduces stress but will often get you over the line if it is going to be a close pass!
2. **"Compulsory" Attendance:** Attendance IS compulsory. It doesn't matter if you technically don't have to attend the class to pass, don't be silly. Anything can happen in that final exam and you'll be livid if your over confidence cost you the ability to sit a supp!
3. **Demonstrators \$\$:** Being a demonstrator in your later years not only looks great on the resume but also puts a little extra cash in your pocket! Your lecturers will tell you about these opportunities when they arise.
4. **Study Buddies:** Make your best effort to make some study friends! It'll help you more than you could imagine.



JOIN Arc
TODAY



Arc 2020

Arc is your gateway to a 2020 full of adventure, opportunity and great memories. Join up, grab your shiny member sticker and get stuck in.

CLUBS

From Knitting to Negotiation skills, our 300+ Clubs provide you with endless opportunities to explore your passions and try new things. Keen to get more involved in the Engineering community? Check out your faculty society EngSoc or find like-minded people at Engineers without Borders, Women in Engineering or Engiqueers.

VOLUNTEER

The gift that gives back. Take some time outside the classroom to get involved in community building, campus events or helping to make the world a more sustainable place. With dozens of programs available, there are heaps of opportunities to meet new people, expand your skills and make a real impact.

SPORT

Make a move! Combine your social life with exercise with Social Sport, Pick-up-and-Play, She Can events or at one of our 30+ Sport Clubs. Feeling competitive? Represent (and win!) at Nationals and intervarsity events throughout the year.

HELP

Engineering is a tough enough degree on its own, but sometimes life brings a little extra stress to the table. If you're dealing with tricky complications related to academic misconduct, special consideration, tenancy, contracts or employment, hit up Arc Legal & Advocacy for advice. Finding uni overwhelming? Check out Arc Wellness online for tips on self-care and wellness.

EVENTS

Burgers, bevs and bangin' parties. What else is uni about? Break free from the library to hit up Roundhouse for late night feeds, beer on tap, major ragers and unmissable weekly gigs.

HEAPS MORE

Head online to feast your eyes on our full range of member benefits, including major discounts, cheap trips and free bike repairs!

FOLLOW US FOR MORE

arc.unsw.edu.au

 ArcUNSW

 ArcUNSW

CONTACT US

WE LOOK FORWARD TO WELCOMING
YOU TO UNSW ENGINEERING IN 2020.

The Nucleus: Student Hub - Engineering Student Services

Library, Level 2 (Ground Floor)

9am – 5pm Monday to Friday

Ph: +61 2 9385 8100

Submit an online enquiry

You can submit an enquiry via [unsw.to/webforms](https://www.unsw.edu.au/webforms)

Join the queue before your visit

Instead of standing in line at The Nucleus: Student Hub, use your mobile device to reserve your place in our virtual queue.

1. Download the Uni-Verse app (requires log-in) to your phone.
2. Select the My Services icon. Queue wait times are displayed, so you can decide if you want to wait or reserve your place in the queue later.
3. Select the Nucleus Hub icon. Enter your mobile number and query details.
4. Select the Join the queue button. You will receive an SMS when it's your turn.

Join us on social media for all the latest news and updates

 UNSW Engineering

 uNSWEngineering

 UNSWEngineering

 <https://www.engineering.unsw.edu.au/>

