



SYDNEY, AUSTRALIA  
AUGUST 2023

# ACCELERATING CITY EQUITY PROJECT OCEANIA REGIONAL WORKSHOPS

INTERNATIONAL  
SOCIETY FOR  
URBAN HEALTH



UNSW  
Cities Institute



## ACCELERATING CITY EQUITY PROJECT

ISUH launched in 2022 the Accelerating City Equity Project (ACE) with the mission of mainstreaming equity into sustainable urban development policy and practice. For ACE, equity is defined as the condition under which all groups of people – especially the ones who have been historically marginalized – have access to and agency over the environments and opportunities that enables health and wellbeing today and for future generations. Aligned mostly with the Sustainable Development Goals 10 (reduced inequalities) and 11 (sustainable cities and communities), ACE contributes to making cities healthier, more inclusive, safe, resilient, and sustainable for all residents, not just a few.

Alongside local grassroots leaders, policymakers, urban health scholars and professionals from Africa, Asia, Europe, Latin America, Oceania, the U.S. & Canada, the ISUH are studying projects that improve the lives of individuals and communities around the world. This project aims to accelerate the exchange of global knowledge on the drivers of equity in sustainable urban development and the implementation of practices found to be most catalytic in cities. The project will identify and learn how equity—improving the health and well-being of all residents, not just a few—can drive sustainable development in cities worldwide.

With funding from the Robert Wood Johnson Foundation, this project aims to accelerate not only the exchange of global knowledge, but also the implementation of practices found to be most catalytic in cities. The project will help local grassroots leaders, policymakers and organizations identify the key elements of successful equity-driven urban development practices, with the goal of growing their use and improving equity in cities worldwide.

In 2023, the ACE Project is focused on strengthening and expanding our diverse community of practice, especially through the organization of in-person learning and exchange activities in every world region, in partnership with local organizations and as part of already existing events. These meetings are the major milestones of our process of identifying the key elements of successful equity driven sustainable urban development practices and creating actionable tools to drive equity in specific contexts.

In Oceania, we are partnering with the UNSW Cities Institute through a series of workshop sessions and site visits that are part of the program of the 11th International Conference on Urban Climate (ICUC11).





**ACE SCHEDULE AS PART OF ICUC**

<https://icuc11.com/program/program-matrix/>

**Monday 28th August**

Time	Event	Location
08:00	Registration for ICUC	Refer ICUC online schedule
08:30	Opening Plenary session 1	Refer ICUC online schedule
10:00	Morning tea and poster viewing	Refer ICUC online schedule
10:30	ACE Oceania workshop 1	Matthews Room 107
12:30	Lunch	Refer ICUC online schedule
13:30	ACE Oceania workshop 2	Matthews Room 107
15:00	Afternoon tea and poster viewing	Refer ICUC online schedule
16:00	ACE Oceania workshop 3	Matthews Room 107
17:30	Welcome Icebreaker dinner	Refer ICUC online schedule

**Tuesday 29th August**

Time	Event	Location
08:30	ICUC	Refer ICUC online schedule
10:30	Morning tea and poster viewing	Refer ICUC online schedule
11:30	ICUC	Refer ICUC online schedule
12:30	Lunch	Refer ICUC online schedule
13:30	ICUC	Refer ICUC online schedule
15:00	Afternoon tea and poster viewing	Refer ICUC online schedule
16:00	ICUC	Refer ICUC online schedule
17:30	UNSW Climate and Cities Showcase	Refer ICUC online schedule

**Wednesday 30th August**

Time	Event	Location
08:30	Extreme Weather and Climate in Urban area	Refer ICUC online schedule
10:30	Morning tea and poster viewing	Refer ICUC online schedule
11:00-16:00	Urban Walk: GreenWay (there will be points to drop off through the tour)	Meet at UNSW High Street Light Rail stop
16:00	ICUC	Refer ICUC online schedule
17:30	ACE drinks	Surry Hills TBC



Source: ACE US & Canada Regional Group; Long Beach Fresh Crop Swap & Food Policy Council



## AGENDA: MONDAY 28TH AUGUST ACE SESSIONS

### Workshop # 1: 10:30-12:30

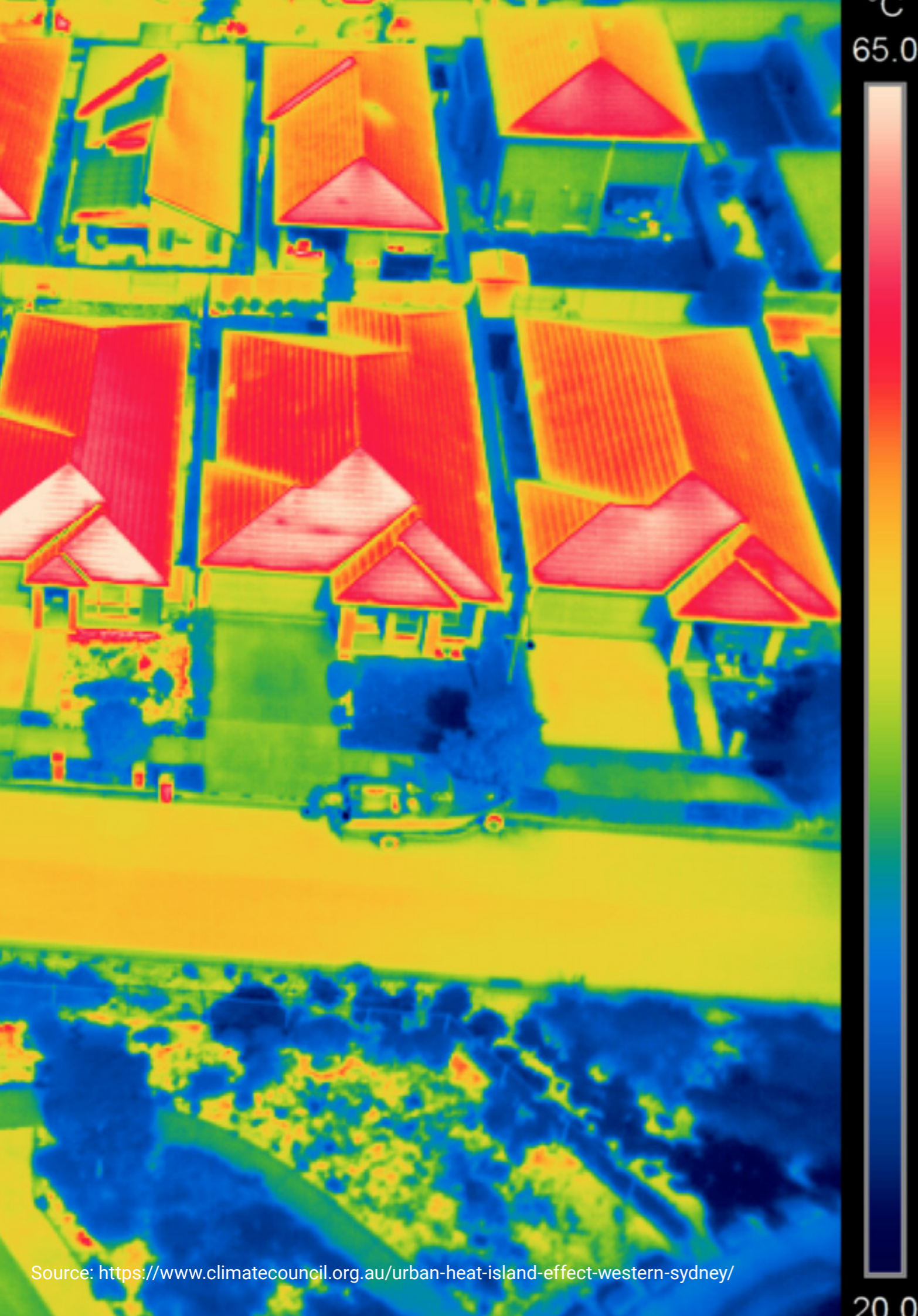
No.	Topic: ACE Screening Room
1	Welcome, intro to the CI + ACE Workshop
2	Icebreaker
3	Featured speaker: Prof. Philippa Howden-Chapman
4	Conceptual introduction to ACE Project
5	ACE Storytelling session
6	ACE storytelling guided discussion
7	All group discussion/report back
8	Featured speaker: Dr Mary-Anne Teariki
9	Close

### Workshop # 2: 13:30-15:30

No.	Topic: Equity in Action
1	Welcome and intro
2	4 x 4min short presentations
3	Activity
4	4 x 4min short presentations
5	Activity
6	4 x 4min short presentations
7	Activity
8	Featured speaker: Keziah Bennett-Brook
9	Open discussion

### Workshop # 3: 16:30-17:00

No.	Topic: ACE Toolkit testing
1	The 5 Actions + Toolkit Intro
2	Featured speaker: Rangimarie Price
3	Featured speaker: Dr Anita Latai-Niusulu
4	Exercise: Diagnostic & Applying the Toolkit
5	Report Back
6	Feedback and close



## THE INTERNATIONAL SOCIETY FOR URBAN HEALTH

Founded by The New York Academy of Medicine in 2002, ISUH is today the only global non-governmental organization focused on advancing urban health and health equity by addressing the social, economic and environmental factors that influence health, well-being and inequalities in urban areas around the world. ISUH works to advance the generation, exchange, and application of interdisciplinary and

inter-sectoral urban health knowledge and educational models and to support the development of evidenced based programs and policies to promote urban health. It serves as a global crucible for thought leadership, interactive discussion forums, collaborative networks, dynamic conferences, and scholarly publications on urban health and urban health environments.



Source: ACE US & Canada Regional Group: Long Beach Fresh Crop Swap & Food Policy Council

Photo Courtesy of Long Beach Fresh



## ISUH TEAM



**Giselle Sebag, MPH, LEED AP, Executive Director ISUH**  
gsebag@isuh.org

Giselle is Executive Director of ISUH. She is a globally recognized urban health leader with 15 years of experience advising governments, multilaterals, NGOs and private sector companies to develop sustainable, inclusive, and resilient cities that promote and enhance resident health. Giselle holds a Master's of Public Health from the Harvard T.H. Chan School of Public Health, joint M.Sc. degrees in international cooperation and urban development from the Technische Universität Darmstadt and international cooperation in sustainable emergency architecture from the Universitat Internacional de Catalunya, and bachelor's degrees in architecture and government from the University of Texas at Austin's School of Architecture (UTSOA) and College of Liberal Arts.



**Lia Brum, Accelerating City Equity Project Manager ISUH**  
lbrum@isuh.org

Lia is a multilingual professional with a 15-year career in international nonprofits, Lia has experience managing urban knowledge exchange projects and liaising with mayors, senior officials, and technical staff of major cities worldwide. She has worked as well in the fields of biodiversity conservation finance, environmental corporate responsibility, educational media, and scientific dissemination. Lia holds joint M.Sc. degrees in international cooperation and urban development from the Technische Universität Darmstadt and international cooperation in sustainable emergency architecture from the Universitat Internacional de Catalunya, and bachelor's degrees in journalism (UFRJ, Brazil) and international relations (PUC-Rio, Brazil), as well as complementary education in environmental management (UFRJ, Brazil) and business (Harvard Business School).



Source: Rosemary Korowali ACE Oceania Regional Hub Meeting 2022, PNG WASH

## ISUH ACE TEAM



### **Anna Abenheim, MA – Communications, Outreach & Partnerships**

A creative urban planner, project manager and communication specialist, Anna has lived in nearly 10 different cities over the past 10 years. She is passionate about cities, their streets, their cultures and their people. She is enthusiastic about urban design and a fervent believer that public spaces are the backbone of our cities worldwide and should be at the heart of city building and planning today. Anna has a Masters in International Public Management from Sciences Po Paris with a major in Global Health; she also studied Geography and Urban Studies at the University of Toronto and the University of British Columbia. Anna has worked for the United Nations; the Council of Europe; the French government; and in several think tanks and NGOs across the world, such as The Young Foundation or Future Cape Town. A self-taught chef, Anna currently divides her time between her passion for cities and her love for cooking.



### **Patrin Watanatada, MA – Lead Assessment Framework**

Patrin leads the development of the Accelerating City Equity (ACE) assessment framework, our core framework for distilling what's working around the world to drive equity in sustainable urban development. She also collaborates with the ACE team on tools and content to share these insights with practitioners. Patrin is an independent consultant working with nonprofits, foundations, and creative businesses to use ideas to spark equitable cross-sector change. She was previously the first knowledge for policy director at the Bernard van Leer Foundation, where she helped develop their award-winning Urban95 programme to link urban planning and healthy early childhoods. Patrin has also worked in social change communications (at Fenton), strategy consulting (at SustainAbility and Oliver Wyman), and in a biomass energy start-up in Thailand. Patrin serves on the board of Capita, a think tank working to build a future where all children and families flourish. She is involved with her local anti-racism and climate action groups, and has become passionate about community-led change.

## UNSW CITIES INSTITUTE TEAM



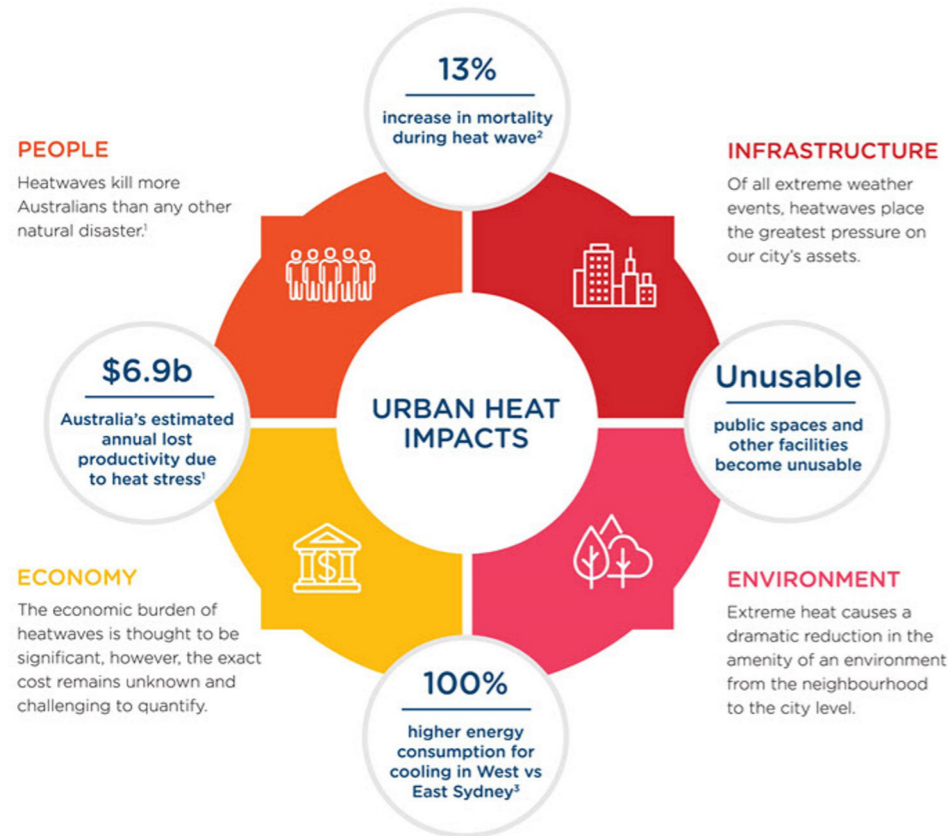
**Professor Peter Poulet, Director**  
[p.poulet@unsw.edu.au](mailto:p.poulet@unsw.edu.au)

Professor Peter Poulet is the inaugural Director of the UNSW Cities Institute and was appointed to this position in February 2023. Peter's leadership is guiding the Institute's delivery as an independent entity working with government and industry to reinvent cities for sustainable, healthy, prosperous, and socially just urban futures. Peter's background is as an architect with 35 years of experience in the private, public and the university sector and a practising and exhibiting visual artist. He brings industry, government, academic and creative capability to the role. His extensive professional background includes his current role as Central City District Commissioner for the Greater Cities Commission, delivering the NSW Government's vision for Sydney's future and his previous appointment as NSW Government Architect from 2012 to 2018.



**Hannah Bolitho, Accelerating City Equity Oceania Regional Hub lead, ISUH & Manager Strategy & Business, UNSW Cities Institute**  
[h.bolitho@unsw.edu.au](mailto:h.bolitho@unsw.edu.au)

Hannah is the Manager Strategy & Business of the UNSW Cities Institute and the Oceania regional hub lead for the ACE project with the ISUH. She is an architect and urban designer with a keen interest in how multidisciplinary collaborations between research and practice can drive equitable and sustainable outcomes in our cities. She is a registered architect and has a Master of Urban Design, including time in Barcelona studying international development. Previously, she worked as an urban designer in Strategic Planning at the City of Sydney and at the NSW Government Architect's Office. Hannah has recently completed her research as a recipient of the Byera Hadley travelling scholarship to Europe investigating how to influence and advocate for better amenity and equity outcomes through the intersection of politics and urbanism.



Source: Dr N. Nazarian, Oceania Regional Bright Spot presentation (2022)

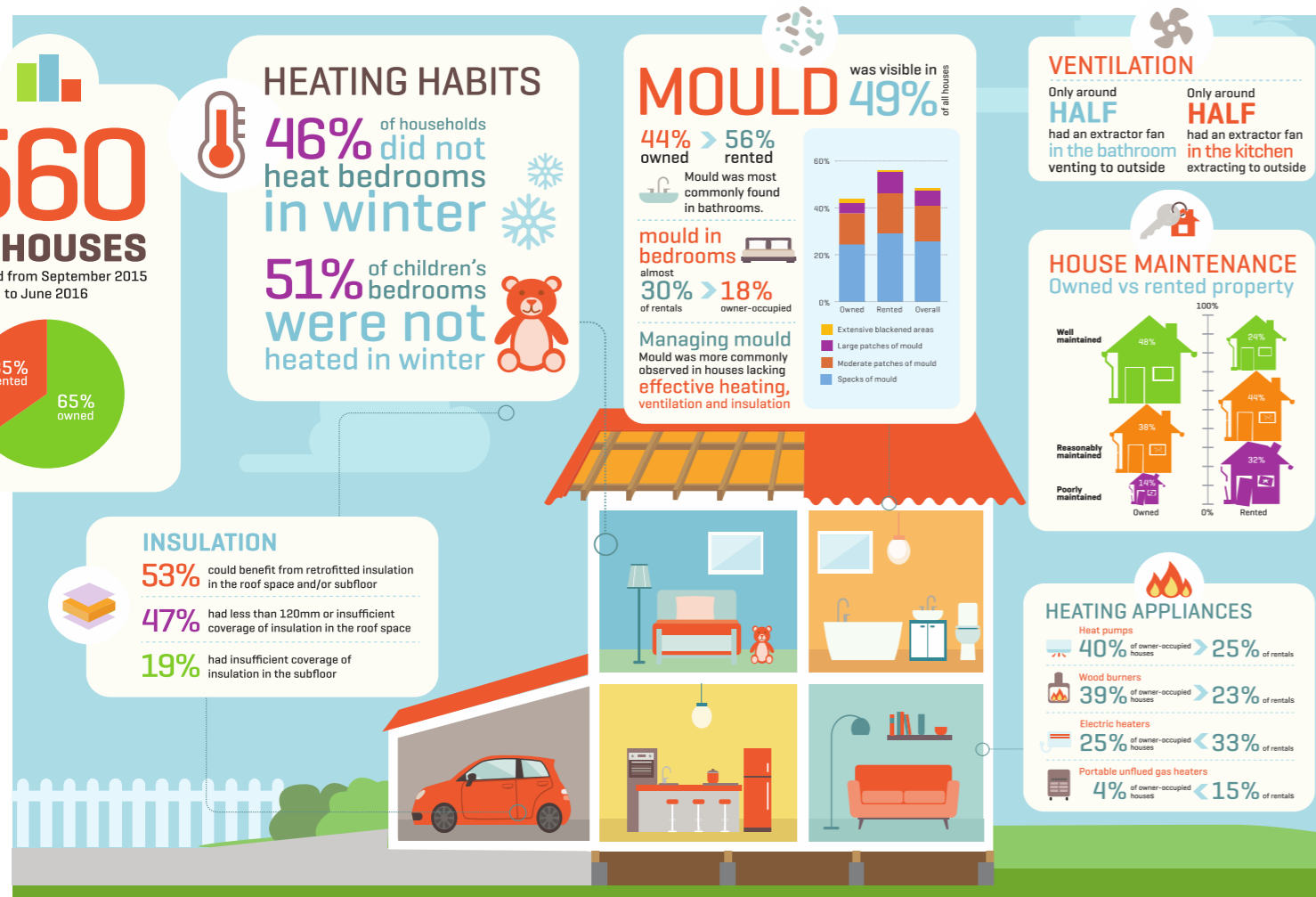


**FEATURED SPEAKERS**

**Professor Philippa Howden-Chapman**  
[philippa.howden-chapman@otago.ac.nz](mailto:philippa.howden-chapman@otago.ac.nz)

Philippa Howden-Chapman, sesquicentennial distinguished professor of public health at the University of Otago, Wellington, is co-director of He Kāinga Oranga/ Housing and Health Research Programme, the NZ Centre for Sustainable Cities and the WHO Collaborating Centre on Housing and Wellbeing. Her housing research, designed to reduce inequalities, is carried out in partnership with local communities and has had a major influence on housing, urban and health policy.

She is a director on the board of the Crown Agency Kāinga Ora-homes and communities, a fellow of the Royal Society of NZ and former chair of the International Science Council Committee, Urban Health and Wellbeing: a systems approach. She has received numerous awards, including the Prime Minister's Science Team Prize and the Royal Society of NZ Rutherford Medal. She has a Queen's Service Order and is a Companion of the NZ Order of Merit for contributions to public health. Rangimarie Price



Source: Philippa Howden Chapman





**Rangimarie Price**  
rangimarie@punaora.nz

Te Āti Haunui a Pāpārangi, Whakatohea, Ngai Tai ki Torere. Rangimarie has held a number of CEO roles developing Iwi-led solutions for Maori based on Te Ao Maori values and development priorities. She worked with multiple iwi (tribal) entities to develop the first regional economic growth strategy shaped through a Maori lens. Implementation of the strategy included systems innovation and democratising information, power, and capital to catalyse intergenerational self-determination in communities. She led the establishment of Aotearoa's first Iwi owned, tikanga (Maori values and principles) led systemic impact investment platform. As co-founder of The Connective she led the establishment of an investment fund targeted at increasing equity, inclusion and regenerative practice.

As systems innovators, The Connective's work spans community and nationally significant projects that focus on housing equity, climate change and economic models that enable community self-determination.



**Dr Anita Latai-Niusulu**  
a.latai@nus.edu.ws

Anita is a human geographer and the Head of the Department of Social Sciences at the National University of Samoa. Her research focuses on geographic-based issues such as human perceptions and experiences of environmental changes on Pacific islands. Through a number of ongoing research projects, Anita is currently exploring the experiences of children living in Pacific urban areas, short-distance, circular migration or micro-mobilities an adaptive strategy to avoid and reduce climate-related risks and nature-based approaches to adapt and mitigate the converging challenges of climate change and urbanisation. Crucial to her enquiries is the use of holistic and place-based approaches, appreciating local concepts and narrative-descriptive tools to assess and present study findings.



**Dr Mary-Anne Teariki**  
maryanne.teariki@otago.ac.nz

Dr Mary Anne Teariki is a Research Fellow at the University of Otago New Zealand and an Independent Research Consultant. Her areas of expertise include: policy development; collaborative governance, Pacific regional development, urban health, climate change, and migration and settlement. She is currently working on a significant multidisciplinary research project on governance of public sector housing providers in New Zealand.



**Keziah Bennett-Brook:**  
kbennett-brook@georgeinstitute.org.au

Keziah is a Torres Strait Islander woman and Program Head of Guunu-maana (Heal) The George Institute's Aboriginal and Torres Strait Islander Health Program. Keziah Chairs the Research Committee for Aboriginal and Torres Strait Islander Health since 2017 and leads the development and implementation of Aboriginal and Torres Strait Islander health research strategy, policy, stakeholder partnerships and Indigenous research coordination within a global research institute. Keziah has extensive experience in social and cultural determinants of health, Indigenous methodologies, and knowledge translation and impact measurement that privilege Indigenous knowledges, as well as applying decolonising methods to organisational and systems change. Keziah leads implementation of strategic organisational activities to increase cultural safety and capability within global health research.



Source: ACE Latin America Regional Hub, Crezco con mi Barrio, Bogotá .

## OCEANIA CONTRIBUTORS

Name	Role and Organisation
Hannah Bolitho	Oceania Regional Lead ISUH ACE and Manager Strategy, UNSW Cities Institute
Dr Mary-Anne Teariki Dr Negin Nazarian	Research Fellow at the University of Otago Associate Investigator, Centre of Excellence for Climate Extremes Fellow City Futures Research Centre UNSW
Rosemary Korowali Keziah Bennett-Brook	Architect, Director, Sago Network Program Head of Guunu-maana (Heal) Aboriginal and Torres Strait Islander Health Program , The George Institute for Global Health
Kirsten McDonald Dr. Patrick Harris	Resilience Consultant, Previous Associate Principal ARUP Deputy Director and Senior Research Fellow Centre for Health Equity Training UNSW and Sth Western Sydney Local Health District
Dr Nimish Bilorai Dr Hamish Robertson	Associate Professor, School of Architecture UTS Adjunct Fellow, School of Architecture, Health and medical geographer UTS
Professor Susan Thompson Chris Tidswell	Professor Planning and Healthy Places UNSW Principal Landscape Arcadia Landscape and International Federation of Landscape Architects Asia Pacific (IFLA APR) Honorary Secretary
Dr Gillian Barlow Dr. Greg Mews Carl Higgs	Architect, Indigenous Professor of Practice UNSW Urban Design and Town Planning University of the Sunshine Coast Doctoral Researcher, Healthy Liveable Cities Lab RMIT University
Assoc. Prof. Melanie Dalvern Rangimarie Price Dr Anita Latai-Niusulu Prof. Philippa Howden-Chapman	Director Australian Urban Observatory & Acting Deputy Director of the Centre for Urban Research RMIT University Director, The Connective, NGO Head of Department Social Sciences National University of Samoa Lead Healthy Homes, University of Otago
Dr Hugo Moline Dr Annie Matan Prof. Peter Poulet	Architect, public artist, Lecturer University Newcastle Transport, urban design and urban planning professional Commissioner Greater Cities Commission NSW, Director, UNSW Cities Institute
Dr Michael Zanardo	Architect, urban designer and director of Studio Zanardo
Prof. Nicole Gurrán	Professor of Urban and Regional Planning at the University of Sydney
Prof. Julien Forbat	Sustainable development & environmental health expert, University of Geneva

**GREENWAY WALKSHOP**  
**HEALTHY PLANNING ALONG THE GREENWAY: A SUSTAINABLE, INCLUSIVE, SAFE, HEALTHY AND WALKABLE PLACE FOR ALL**



**Professor Susan Thompson**  
 s.thompson@unsw.edu.au

Susan Thompson is Professor of Planning and Associate Director (Healthy Built Environments), City Futures Research Centre in the School of Built Environment, Faculty of Arts, Design and Architecture at UNSW Sydney. Susan is an urban planner, academic and teacher having devoted over 30 years of service to UNSW. Her research informs and connects the community of scholars, policy makers and practitioners. Its focus is on the relationship between people and place, building understandings about the ways in which places can be planned to best support individuals and diverse communities.

Susan is one of the first urban planners in Australia to advocate for the importance of healthy built environments, enhancing the strategic relationship between urban planning and public health. She has made significant contributions to the field's research evidence base, interdisciplinary educational curriculum, and body of scholarship, impacting legislation, policy and practice. Susan has received

numerous awards for her work, including the prestigious Sidney Luker Medal (2015) and the Australian Urban Research Medal (2017). Susan is a passionate advocate for the provision of quality green space in local neighbourhoods for people and planetary health. And if you see an avid Nordic Pole walker wearing a broad brimmed sun hat, purposively walking down Sydney's Inner West GreenWay and further afield to nearby Callan Park, it's probably Susan enjoying unexpected connections with people and their furry companions on her mentally and physically restorative rambles!

**GREENWAY AND LIGHT RAIL: Map showing the GW and LR**





**Resources**

GreenWay website – Inner West Council: <https://www.innerwest.nsw.gov.au/live/environment-and-sustainability/in-your-neighbourhood/bushland-parks-and-verges/greenway>

Light Rail: <https://transportnsw.info/travel-info/ways-to-get-around/light-rail>

Lewisham/Summer Hill Residential Developments: <https://eg.com.au/case-studies/developments/the-flour-mill-of-summer-hill>

View these videos about the GreenWay: [https://www.youtube.com/watch?time\\_continue=1&v=N1z0gn5gKR&feature=emb\\_logo](https://www.youtube.com/watch?time_continue=1&v=N1z0gn5gKR&feature=emb_logo)  
[https://www.youtube.com/watch?time\\_continue=1&v=hFLSzpBe2-g&feature=emb\\_logo](https://www.youtube.com/watch?time_continue=1&v=hFLSzpBe2-g&feature=emb_logo)

Case studies of the GreenWay:

- <https://www.healthyactivebydesign.com.au/case-studies/the-greenway>
- <https://www.governmentarchitect.nsw.gov.au/resources/case-studies/2017/11/the-greenway>
- Listen to the GreenWay Podcast ‘The GreenWay from Cooks River to Iron Cove - Sydney’s urban green corridor’ – Released in May 2022 (Inner West Icons Podcast Series – check out other great podcasts here): <https://pod.link/1621258076>
- Story on the GreenWay (BMJ Open):

- <https://blogs.bmj.com/bmj/2020/04/16/connected-green-spaces-in-cities-pay-real-dividends/>

**What to bring and wear**

- Opal Card or credit card to travel on the Light Rail
- Wear comfortable, weather appropriate walking clothes (check the forecast) and good sturdy, closed-in walking shoes
- Sunscreen and sunglasses; a good shady sun hat
- If wet weather is forecast – bring raincoat and suitable wet weather gear
- Water bottle
- Face mask – you may wish to wear this if in close proximity to anyone – inside or outside and/or on public transport; hand sanitiser for personal use
- Camera, pen and note pad

**Safety Plan**

- Please note the following safety issues:
- Keep together and do not leave the main group
- Be traffic aware crossing busy streets and light rail lines
- Be bike aware when walking along the GreenWay shared path – keep to the left and listen out for bike bells
- Be COVID aware and maintain adequate physical distancing measures during the trip. If applicable, use an appropriate face mask and apply hand sanitiser / soap and water as available

**Overview**

On this walkshop we will be visiting the Inner West of Sydney’s GreenWay – observing its environmental qualities, associated infrastructure for health supportive living for all citizens and public transport facilities.

The inner West Council website describes the GreenWay as follows:

*The GreenWay is an environmental and active travel corridor linking the Cooks River at Earlwood with the Parramatta River at Iron Cove. It mostly follows the route of the Inner West Light Rail and Hawthorne Canal and features bike paths and foreshore walks, cultural and historical sites, cafes, bushcare sites and a range of parks, playgrounds and sporting facilities.*

*The Cooks to Cove GreenWay was first conceptualised more than fifteen years ago by enthusiastic local community advocates who saw the potential for an environmental, cultural and sustainable transport corridor, including active (non-motorised) transport and public transport (light rail) along the route of the former Dulwich Hill Goods Line.*

We will experience many of these features as we travel to the Inner West via light rail and then walk along the beautiful GreenWay.

**Itinerary DRAFT schedule**

Times	Location	Activity and Comments
11:00	Leave UNSW via Light Rail	Travel by Light Rail to Central; Change to Inner West Light Rail to travel to Lewisham West Light Rail Station
12:00	Arrive Lewisham West Light Rail Station	Toilets and refreshments available
12:00 -12:45	Around Lewisham West Light Rail	Viewing medium/high-density residential development at Summer Hill/Lewisham
12:45-14:30	Along the GreenWay	Walking along the Greenway (western side) from Lewisham West Light Rail Station to the bridge at Iron Cove. We will note features along the route, including Gadigal Reserve and the Aboriginal mural; shared path infrastructure (noting varied condition), recreational areas, outdoor gym, signage, landscaping and bush regeneration. Toilets available.
14:30-15:00	Along the waterfront and up to Glovers Community Garden	Inspecting bushland, walking/cycling paths and community garden.
15:00-15:30	Back along the GreenWay to Leichhardt North Light Rail or the Hawthorne Canal Dog Park	Walking back along eastern side of GreenWay, observing arts industry facilities, public art installations, shared pathways, sporting facilities. Inspect the Hawthorne Canal Dog Park and famous Café Bones.
15:30-16:00	Walkshop ends. Heading back to UNSW from Leichhardt North Light Rail Station	Catch the Light Rail to Central Railway Station in the City (approx 20 mins); then transfer to Light Rail to UNSW (approx. 15 mins)

**We unite world class research with a real world approach, engaging with academia, industry, government and community groups to shape policy and pioneer meaningful change in our cities.**



**UNSW**  
SYDNEY



**UNSW**  
Cities Institute

**cities**

**institute**

