



UNSW Medicine & Health

# UNSW Clinical Research Unit

Your gateway to research is here.



## About Us

UNSW Clinical Research Unit (CRU) offers academic researchers the support they need to conduct high quality, impactful clinical research across UNSW and its affiliated networks. The CRU is your gateway for connection and collaboration. We're a growing group of academics and operational professionals, with extensive experience and knowledge in the planning and conduct of human research.

## Why partner with us

We partner with collaborative groups and provide a platform of pre and post award services to strengthen your studies. Leverage our rich ecosystem of infrastructure and expertise across these areas:

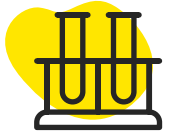
- Research design and statistics
- Protocol feasibility and development
- Budget development
- Ethics and regulatory requirements
- Legal advice for contract execution
- Quality and Risk Management
- Safety Management
- Data Management Solutions
- Health Economics
- Training and development

## Partner with us

CRU is here to partner with you to support project feasibility, design, and budget development to enhance your application. If you're interested, please scan the below QR code and complete the Expression of Interest form.



## UNSW success in clinical research



We aim to build on our already strong reputation in clinical research.

## UNSW awarded over \$13m in NHMRC clinical trial funding

Projects testing the cost-effectiveness of vaporised nicotine products to quit smoking and understanding the health factors influencing dementia are among those to receive NHMRC funding.

Senior Vice-Dean (Research and Operations) at UNSW Medicine & Health, Professor Sean Emery said the funding was critical in helping researchers undertake innovative research that has the potential to improve quality of life and health.



**These grants will help our researchers develop new preventions and treatments to help improve the quality of life for many. I'm proud of the researchers who were successful in this round and look forward to seeing the results of their studies.**



**Professor Sean Emery**  
Senior Vice-Dean of  
Research & Operations  
UNSW Medicine & Health



## Get in touch



[cru@unsw.edu.au](mailto:cru@unsw.edu.au)



Level 4, Lowy Building,  
UNSW SYDNEY NSW 2052

