

From: [Janelle Farmer](#)
Bcc: [CPHCE-all staff](#); [CPHCE PhDs & Students](#); [CPHCE Conioints & Adjuncts](#); [CPHCE Collaborators](#); [CPHCE Advisory Group](#); [CPHCE Steering Committee](#); [CPHCE-Friends](#); [UNSW Social Media Community](#)
Subject: CPHCE Bi-monthly email newsletter - May + June 2024
Date: Tuesday, 9 July 2024 3:36:00 PM
Attachments: [image026.png](#)
[image027.png](#)
[image028.png](#)
[image029.png](#)
[image030.png](#)
[image031.png](#)
[image032.png](#)
[image033.png](#)
[image034.png](#)
[image004.png](#)
[image006.png](#)
[image007.png](#)
[image009.png](#)
[image008.png](#)
Importance: High

CPHCE Bi-monthly Newsletter

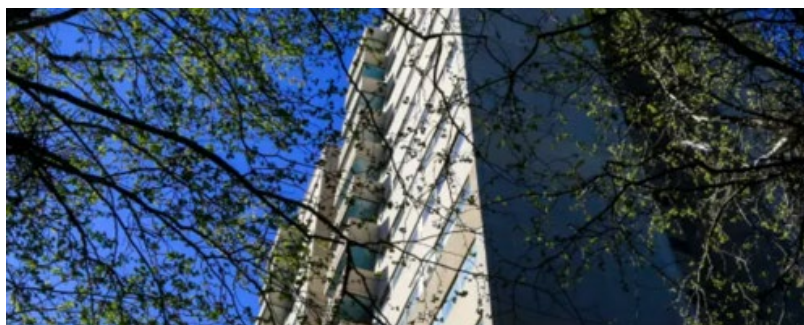
CPHCE, UNSW



CPHCE Bi-monthly Email Newsletter May - June 2024

Highlights

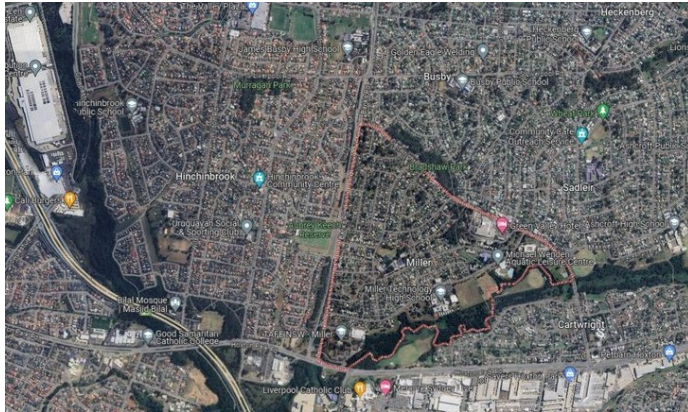
The Waterloo Action Plan



We have been providing research support to the Waterloo Human Services Collaborative Group. The Waterloo Group was established in 2021 'to assist with engagement, planning, and coordinated responses by human services agencies to the Waterloo community, in advance of the Waterloo Estate redevelopment, to address the current and future needs of the community, specifically those living in

public housing'. A range of reports have been published including a qualitative evaluation report and the Tenant Survey (full, and one- and four-page summary reports) See [Reports – Waterloo NSW \(waterloo2017.com\)](#). General findings include that most tenants feel part of the community, know their rights, feel Waterloo is a good place to live but also feel lonely, that their views were not being heard and dissatisfied with the speed of repairs. These findings are being acted upon as part of the review. The tenant survey results were also published in the South Sydney Herald ([‘Tenants have their say about Waterloo’](#)). For further information contact [A/Prof Fiona Haigh](#).

Miller Household Survey 2022-2023



[The final report of ‘Miller Household Survey 2022-2023’ has been published.](#) CHETRE has conducted random household surveys in the Miller community since 1999. The data offer insights into current service usage, community perceptions issues and needs. The survey showed a mixed picture compared to 2010, highlighting positive trends such as reduced concerns about crime and antisocial behaviour, improved perceptions of personal safety, and increased community acceptance and openness towards newcomers. Please contact [Andrew Reid](#) for more information.

Health Equity workshop



HERDU delivered a two-day Health Equity workshop as part of UNSW's Master of Public Health elective course "Inequalities, Inequities and Health" on 20–21 May. The workshop focused on three main areas: conceptualising health equity, understanding the causes and explanations for health inequities, and taking action. HERDU offer places to our LHD partners and this year we had 13 LHD staff from Sydney and South West registering for the two-day workshop and a good turnout. Please contact [A/Prof Fiona Haigh](#) for more information.

The Community Health Worker (CHW) Community of Practice



The Community Health Worker (CHW) Community of Practice (CoP) is a bi-monthly forum of inter-state, state and local representatives/practitioners hosted by CPHCE as part of its [Community Health Navigator programs](#). Its focus is to enhance the development of community health workers, and workers in similar roles, to assist patients in navigating primary health care and all aspects of the health system. It aims to share knowledge, experience and learning; support the translation of evidence/research into practice; integrate work into policy and research; and support the accreditation, training and ongoing support of community health workers. For more information, please contact [Cathy O'Callaghan](#).

People



Kath Thorburn received an '[Outstanding Co-design](#)' award from [2024 Equally Well Forum](#). Kath was recognised for sharing knowledge and practice of co-design in mental health settings.

Dr Yang Li has joined CPHCE as a statistician in early June 2024. Yang Li was previously a research fellow at The George Institute for Global Health with lots of experience and so strong interests in conducting quantitative statistical analysis, statistical programming and data management of large and complex medical/health data. She will be working at CPHCE on Thursdays and Fridays on a range of research projects conducted/managed here at CPHCE that involve in statistics and data management.

Communication



- **Professor Young-Bok Kim, from Daegu University, Korea is visiting CPHCE** as part of her sabbatical leave for the next 4 weeks. She will be based at HERDU and CPHCE and she is interested in learning more about health impact assessment and health equity in the Australian context.
- **Chris Standen gave evidence at the NSW Government's [Inquiry into the impact of the Rozelle Interchange](#)** on 30 May 2024. In his [evidence](#), he explained how the business case and environmental impact statements were able to be manipulated to overstate the benefits and understate the negative health and other impacts.

Publications

- [Critical Success Factors for Intersectoral Collaboration: Homelessness and COVID-19 – Case Studies and Learnings from an Australian City](#)
By Fiona Haigh & more
- [Creating the conditions for collaborative decision-making in co-design](#)
By Kath Thorburn, Catherine Spooner, Mark Harris & more
- [A systematic review of whether Health Impact Assessment frameworks support best practice principles](#)
By Fiona Haigh & more
- [Dual tobacco smoking, electronic cigarette use and COVID-19 outcomes](#)
By Nouhad El-Haddad, Freddy Sitas & more

Upcoming Event

CPHCE Annual Forum 2024

Tuesday 27th August 2024

@Tyree Room, John Scientia
Building, UNSW Kensington



Save the Date ! CPHCE Annual Forum & Research Showcase 2024 on Tue 27 August

@Tyree Room, John Scientia Building, UNSW

[CPHCE will be holding its Annual Forum](#) at the **Tyree Room, John Scientia Building, UNSW Kensington** on **Tuesday 27th August 2024 from 9.00am to 1.30 pm**, followed by a light lunch. This year's theme will be 'Locational Disadvantage'. There will also be presentations and discussion on new and current directions in CPHCE research. Please [get your ticket now](#) and stay tuned for more information.

Centre for Primary Health Care and Equity
Faculty of Medicine & Health
Level 3, AGSM Building
University of New South Wales
Sydney NSW 2052

Ph +61 2 9385 1547

Follow Us



Copyright © 2024 UNSW Sydney. All rights reserved. CRICOS Provider Code 00098G