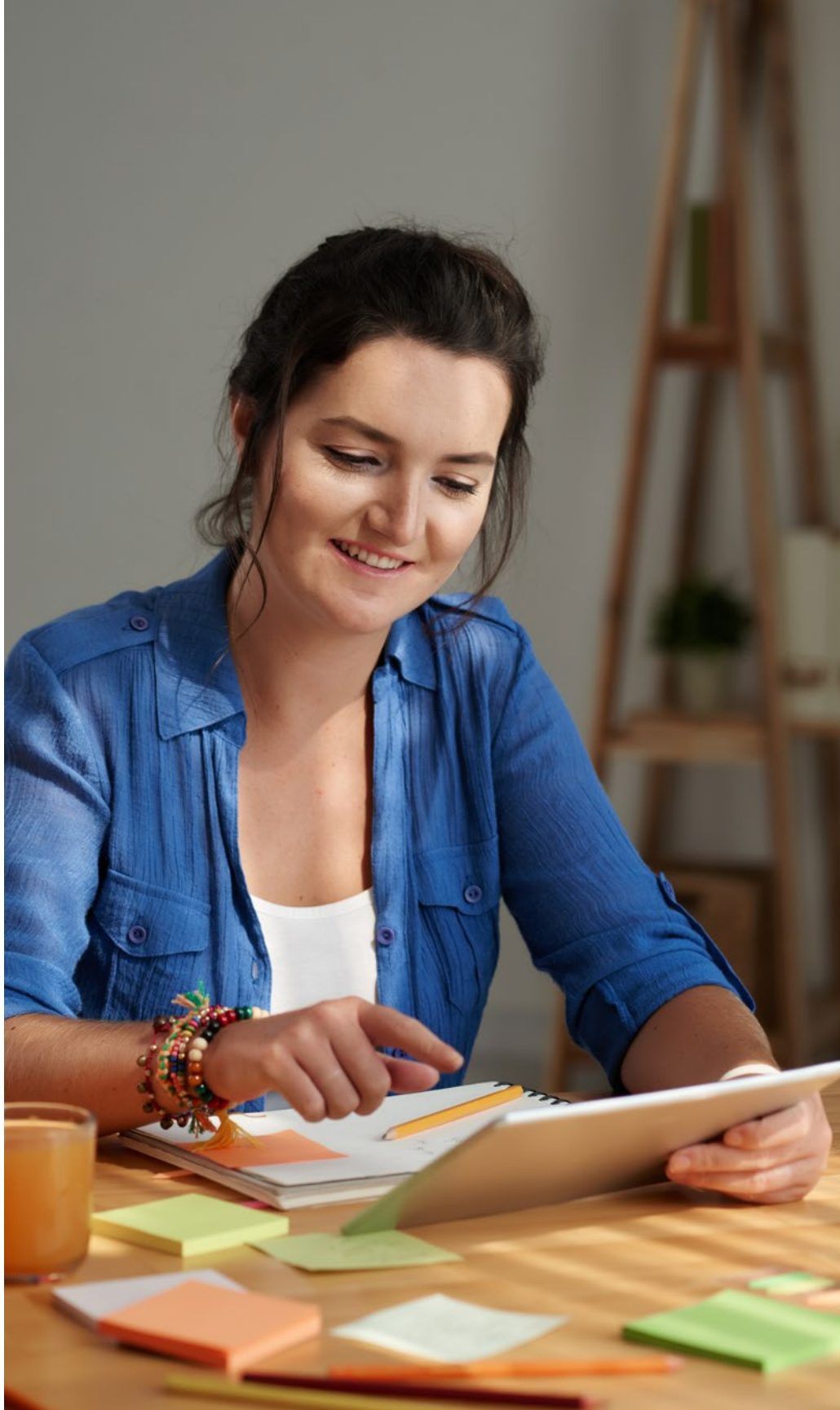


Master of Teaching (Primary)



UNSW Arts, Design & Architecture
ada.unsw.edu.au





Master of Teaching (Primary)

- You will be eligible to teach after only one year of full-time study
- You will gain practical experience by working in a local primary school
- Commonwealth supported places are available for eligible students

What is it?

The Master of Teaching (Primary) is a postgraduate initial teacher education program that was developed in partnership with the NSW Department of Education and local primary school networks. The excellence of our school- university program stems from an emphasis on four pillars: school communities, feedback and dialogue, inspired learning through inspired teaching, and being digital.

As a new program that began in 2018, there is an emphasis on applying the latest research into evidence-based practice and ensuring our staff model the use of the most up-to-date technologies and approaches to curriculum. The program takes into account contemporary and emerging developments in education, curriculum requirements, community expectations, and our local and national employer needs and workforce demands.

The program is a two-year equivalent accelerated primary teacher degree that can be completed in four terms full-time (1.3 years). While the program is fixed (students will overload and complete 4 courses each term), part-time study is possible. The program is accredited by the NSW Education Standards Authority (NESA), enabling graduates to teach in both government and non-government primary schools in all states of Australia and overseas.

Entry Requirements

If you wish to study the Master of Teaching (Primary), you must have completed a recognised undergraduate degree, consisting of at least eight units of undergraduate study across one or more key learning areas, with no more than two at first year and at least two at third year.

Key Learning Areas (KLA) include:

- English
- Mathematics
- Science and Technology
- Human Society and Its Environment (History and Geography)
- Creative Arts
- Personal Development, Health and Physical Education

Please note that upon completion of the Master of Teaching (Primary) you will be qualified to teach across the primary curriculum with a specialisation dependent on the KLA that you have the most content knowledge in.

Minimum Mathematics Requirement:

Additionally, you must meet the below minimum mathematics requirement.

- Have completed a two-unit course of HSC* Mathematics (after 2001) and have achieved a minimum Band 4 (70+) in the subject OR
- Have completed 0.125 EFTSL unit of Mathematics in a prior degree
- and achieved a minimum mark of 65 (credit) OR
- Complete an equivalent two-unit tertiary preparation course via TAFE NSW and achieve a minimum Band 4 (70+). This course must be completed prior to commencement of EDST6765 Professional Experience 2 (final placement)

* If you completed the HSC after 2001, please provide a copy of your results.

If you did not complete the HSC, you may be asked to provide evidence of meeting the minimum mathematics requirement as stated above.

Are you ready to apply?

Before you apply make sure you have completed a self-assessment using the following steps and that you meet all the requirements

Step 1:

You need to meet certain subject content requirements to be eligible for entry into the Master of Teaching (Primary). [Check the subject content requirements.](#)

Step 2:

Have you prepared your [personal statement](#)*?

When submitting your application you will also need to prepare a personal statement outlining why you would be suitable for primary teaching.

How to apply

Domestic applicants

Apply through UAC between 4 September and 31 October 2024 (early bird processing fee) and between 1 November 2024 and 14 January 2025 (standard processing fee). [Apply here.](#)

International applicants

Apply through UNSW from now until 14 January 2025. [Apply here.](#)

* Please note that a personal statement is required for all applications, regardless of the application method.

If you have any questions or would like to request an informal content knowledge pre-assessment, email the School of Education directly: education@unsw.edu.au

Additional requirements

By the first week of the program, you must complete all of the below compliance requirements:

NB: The Work Integrated Learning (WIL) Team will be seeking this information prior to your first placement (INSTEP).

- [Apply for a Working With Children Check \(WWC\)](#)
- [Complete the ASCIA Anaphylaxis Certificate*](#)
- [Complete a Declaration for Child Related Work](#)
- [Create an account and complete Child Protection Awareness Training](#)

* You can also choose to complete a CPR training course, as this will be required when you start teaching.

Before going out to your final school placement, you will need to:

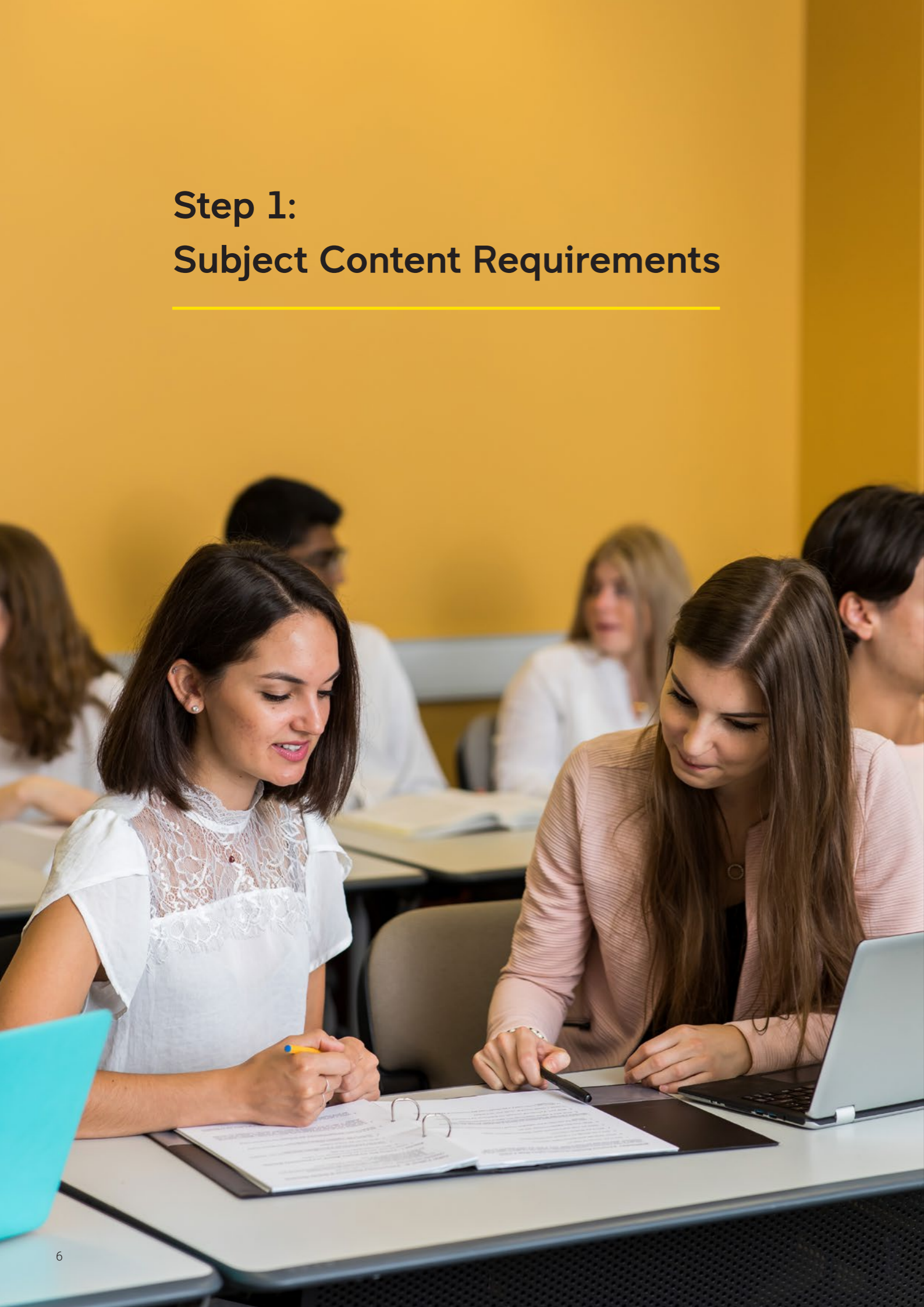
- Undertake the [Literacy and Numeracy Test for Initial Teacher Education \(LANTITE\)](#)

Get started on compliance early to avoid delays at the start of the program.

Plan your year

The Master of Teaching (Primary) program is unique in that it does not exactly follow the University calendar. To help you plan your year, including when you can take holidays, see the [2024 calendar](#), for an indication of when things could be scheduled for 2025.

Step 1: Subject Content Requirements



Key learning areas

Please note that upon completion of the Master of Teaching (Primary) you will be qualified to teach across the primary curriculum key learning areas with a specialisation dependent on the KLA that you have the most content knowledge in.

English	English with a strong core component of study of English literature, communications, creative writing, language studies (English), linguistics, literature studies, media studies (i.e., the theoretical study of media or where the product is a literary text).
Mathematics	Pure or applied mathematics, other studies of mathematics that are relevant to the central concepts, modes of enquiry and structure of the content/discipline(s).
Science and technology	Agriculture, architecture, biology, bio-technology, chemistry, computing studies, design - interior, industrial, graphics, fashion, product, landscape (2 units only), design and technology, engineering, geology, earth and/or environmental science, materials science, medicine, nursing, physics, psychology.
Human society and its environment	Aboriginal studies/languages, anthropology, archaeology, Asia or Pacific studies, economics/business studies, cultural studies/sociology, geography/environmental studies, government and citizenship, history, legal studies, political science, studies of religion.
Creative arts	Dance including practical experience in choreography and performance in several dance styles and dance history/theory, drama including experiential involvement in making and performing drama, music including performing (singing, playing and moving), listening and organising sound (composing) within a wide range of repertoire, visual arts including art making and art history/theory.
Personal development, health and physical education	Physical education, family studies, sports science, health studies, human movement, nutrition



Step 2: Personal Statement

When submitting your application you will also need to prepare a personal statement. The personal statement should be no more than 150 words and include your reasons for wanting to be a primary teacher and why you are well suited to the role.

A personal statement is required for all applications, regardless of application method.

FAQS

What does 'accelerated program' mean?

If you complete the program full-time, you will be fitting in 2 years' (6 terms) worth of study into 1.3 years (4 terms). To do this, you will have an 'overloaded' program (complete up to 4 courses per term instead of 3). This makes it an intensive program and it is therefore recommended that you have flexible work commitments during this time.

[Check out the full-time program plan](#) (2025 program plans will be the as 2024).

If you have personal commitments that you cannot avoid, you may want to consider completing the program over 1.7 years (5 terms) or part-time over 2.3 years (7 terms).

Please note that you can always drop down to part-time if you find the workload too much, however you cannot jump from part-time to full-time due to the structure of the program.

Can I study this program part-time?

Yes, but you need to follow a specific plan of study as outlined by UNSW School of Education.

[Check out the part-time program plan](#)

What are the English language proficiency requirements?

A very high level of competence in spoken and written English is required to participate in this program. Find out more about the [English language requirements](#).

All applicants (domestic and international students) must meet the above criteria and submit evidence with their Master of Teaching (Primary) application. If you have undertaken prior study in the English language you still need to submit this evidence.

Before going on your final 9-week placement, you will need to undertake the [Literacy and Numeracy Test for Initial Teacher Education](#) (LANTITE). You can complete this prior to the program starting. Test windows can be found [here](#).

NB: if you follow a full-time program plan, it is recommended that you complete the LANTITE no later than window 3 of year one to avoid delays.

Can I start mid-year?

No. Intake is only available in Term 1 each year to align with the school calendar year and pre-requisites.

Does my degree from overseas qualify me to study the Master of Teaching (Primary)?

It can, as long as you have met the [entry requirements](#). Please note that you may be asked for additional information following your application to determine the equivalency of your courses to those of UNSW.

What is the personal statement that I must complete?

In addition to meeting the graduate and background studies requirements, you must submit a personal statement outlining your suitability for primary teaching. Your statement should be no more than 150 words and include your reasons for wanting to be a teacher and why you are well suited for that role.

Am I eligible for a commonwealth supported place?

[Commonwealth supported places](#) (CSPs) are offered in the Master of Teaching (Primary).

To get a CSP, you must be:

- an Australian citizen, who will live and study in Australia for some of the course; or
- a New Zealand citizen, who will live and study in Australia for the whole course; or
- a permanent visa holder, who will live and study in Australia for the whole course

What subjects do I choose?

Please refer to the Master of Teaching (Primary) [program plan](#) for the courses you will need to choose each term.

What is the In School Teacher Education Program (INSTEP)?

Your professional journey to becoming a graduate teacher is enriched through the dynamic interaction of practice and theory through site-based experiences during your degree program. The journey begins with your In-School Teacher Education Program (INSTEP) that commences in the first few weeks of term one. During the first year of your program, you will spend a minimum of 10 days in primary schools for practical INSTEP experiences. More information [here](#).

Delivery Mode

Whilst there are mandatory in person placements and workshops, coursework can be studied fully online by way of class selection. For further information, please reach out to education@unsw.edu.au



Contact us

UNSW Future Students Office
Degree and admission advice

Ask a question unsw.edu.au/ask
1300 UNI NSW (1300 864 679)
futurestudents.unsw.edu.au